

*Entries, including "On Line Entries", close Monday 4<sup>th</sup> July*



# 2022 SCHEDULE

## The 41<sup>st</sup> Annual Show

[www.nationalsidesaddleshow.co.uk](http://www.nationalsidesaddleshow.co.uk)

(Only open to SSA Full [REDACTED] & Junior Members except for the HOYS Ladies Show Horse Qualifier when Non-SSA Members must become Show Day Members)

The National Side Saddle Show Group  
organises the National Side Saddle Show on behalf of

***The Side Saddle Association®***

[www.sidesaddleassociation.co.uk](http://www.sidesaddleassociation.co.uk)



Classes include

The 2022 Side Saddle Association Equitation Championships,  
the Sir Lancelot & Classical Finals and over 75 classes for all Side Saddle Riders  
Qualifiers for the

BSHA Ladies Show Horse Championship

CHAPS (UK) Championship Show

Horse of the Year Show Ladies' Side Saddle Horse of the Year

Veteran Horse Society Supreme Final Show

to be held at

**Bury Farm Equestrian Village, Mill Road, Slapton,  
Leighton Buzzard, LU7 9BT**

*For directions, please visit:*

<http://www.buryfarmstates.co.uk/maps.asp#.YI6SOWZKi8Y>

**Friday, Saturday & Sunday  
5<sup>th</sup>, 6<sup>th</sup> & 7<sup>th</sup> August**

PLEASE NOTE: On Thursday 4<sup>th</sup> August access is from 2.30pm, Stables will be available from 3pm and Competitors requiring Stables must arrive by 8pm  
DOGS MUST BE ON LEADS AT ALL TIMES AND ARE NOT ALLOWED  
in the Competition or Public Areas, Main Building, Cafeteria or Stable Barn

## CONTENTS

Bury Farm Equestrian Village Layout .....	38
Arabs .....	24
Area Team Competitions .....	5 & 30
Caro Cripps and Rococo .....	12
Champagne & Soda Pop Challenge .....	31
Classical Qualifier & Final .....	13 & 26
Clear Round Jumping .....	15
Cobs .....	22
Coloureds .....	26
Contact Details .....	2
Costume Concours d'Élégance & Concours d'Élégance .....	24 & 25
Cygnets Championship .....	15
Dressage Rules, Dressage & Dressage with Jumping .....	7 - 10
Equitation Championships & Equitation Jumping .....	16 - 21
Family Horse / Pony .....	28
Fancy Dress .....	22
Fledgling Riders & Lead Rein .....	22
Hacks .....	22
Historical Costume .....	13
Horsemanship .....	14
HOYS Ladies Show Horse .....	23
Hunters: Show & Working .....	23, 27 & 29
Lady Guinevere Junior Concours d'Élégance .....	15
Mature Riders .....	26 & 27
Merchandise: Carvery Supper/Lunch Tickets, Catalogues, Magic Mugs, Flasks, Polo Shirts .....	32
Mountain and Moorland .....	24
Newcomers Equitation .....	11
Overseas Members – see Rules & Conditions & Equitation Championships .....	16-17, 19-22, 33-35
Pairs .....	30
Pony Showing Classes, Junior Ridden Pony and Show Pony/Pony of Hunter Type .....	21
Presentations .....	3
Prizes & Awards, including those offered by other Societies/Associations.....	3 to 6
Racehorse to Riding Horse .....	27
Restricted Turnout .....	10
Riding Club Horse / Pony Performance .....	14
Riding Horses .....	22
Right Shoulder Back .....	13
Rules and Conditions of entry, including Health & Safety, Stabling & Overseas Competitors .....	33-35
Show Hunters, HOYS Qualifier & Working Hunters .....	23, 27 & 29
Show Jumping .....	30
Sir Lancelot Final .....	25
Sponsors Acknowledgement .....	31
SSA Merchandise .....	31
SSA Show Points Trophies .....	3
Stabling Information & Rules included in Rules & Conditions of Entry .....	2,3, 33-35
Talland School of Equitation, Training Bursary .....	3
Telephone Numbers & Opening Hours .....	2
Timetable .....	Separate Page
Trade Stands .....	32
Trophies, Points Trophies, Prizes & Awards .....	3 to 4
Versatile Horse / Pony .....	25
Veterans & VHS Qualifiers/Special Awards .....	6 & 28
Working Hunters / Ponies .....	29

**PLEASE CHECK ALL THE SCHEDULE WORDING CAREFULLY,  
ENSURE YOU ENTER ACCURATELY AND HAVE READ THE RULES & CONDITIONS OF ENTRY**

# The 2022 41<sup>st</sup> National Side Saddle Show

## THE NSSSG SHOW OFFICE

**Mrs Samantha Stephenson, Show Organiser**

Spottles Orchard, Norwood Hill Road, Charlwood, Surrey, RH6 0ED

M: 07515 832722 (no calls after 8pm please), E: admin@nationalsidesaddleshows.co.uk

## FOR ADVERTISING, SPONSORSHIP & TO TAKE TRADE STAND SPACE

**Mrs Samantha Stephenson, Show Organiser (as above)**

**or Ms Claire Battle,**

3 Howland's Cottages, Howland Road, Marden, Kent, TN12 9EZ

M: 07868 138482 (no calls after 8pm please) E: nat.sidesaddleshowsponsorship@gmail.com

## TO OFFER STEWARDING AND/OR WRITING ASSISTANCE

**Mrs Sue Pashen, Chief Steward**

M: 07831 462862 (no calls after 8pm please), E: chiefsteward@nationalsidesaddleshows.co.uk

## FOR SSA TROPHIES PRESENTED AT THE SHOW

**Mrs Emma Wright, SSA Trophy Officer**

Falthwaite Grange, Falthwaite Green Lane, Hood Green, Barnsley, S75 3HL.

M: 07703 319657 (no calls after 8pm please), E: trophyofficer@sidesaddleassociation.co.uk

## DURING THE SHOW EMERGENCY TELEPHONE NUMBERS

NSSSG Show Office	Samantha Stephenson	07515 832722
Veterinary Services	Chiltern Equine	01525 222099

## DURING THE SHOW, THE SHOW OFFICE WILL BE OPEN

Thursday: 4.30 pm to 7.30 pm	Friday: 7.45 am to 7.00 pm
Saturday: 7.45 am to 7.00 pm	Sunday: 8.00 am to close of Show

## BURY FARM EQUESTRIAN VILLAGE CAFETERIA

Thursday: 6.30 pm to 9.00 pm	Friday 8.00 am to 9.00 pm
Saturday: 8.00 am to 9.00 pm	Sunday 8.00 am to 5.00 pm

## RINGSIDE CATERING WILL BE OPEN DAILY ADJACENT TO THE LANGSTON ARENA

**\*\* THE HOSPITALITY AREA IN THE GALLERY RESTAURANT \*\***

Everyone is welcome for Tea, Coffee and Soft Drinks

## COMPETITORS' ATTENTION IS DRAWN TO

**The National Side Saddle Show's Rules and Conditions of Entry on Pages 34 to 36**

These are important and must be adhered to - you sign and agree to abide by, when entering. There will be additional updates in the Letter in your Competitor Envelope.

## MEMBERSHIP/POINTS CARD MUST BE SHOWN WHEN

**COLLECTING COMPETITOR ENVELOPES and when making LATE ENTRIES**

Exercising is permitted in the Langston & Indoor Arena 2 on Thursday and then as on the Timetable. The Grass field can be used at any time.

**\*\* ALL STABLES, LORRY PARK HOOK UP & HAY/HAYLAGE \*\***

**MUST BE BOOKED DIRECTLY IN ADVANCE**

with Bury Farm Equestrian Village: [www.buryfarmstates.co.uk](http://www.buryfarmstates.co.uk)

(Events, Diary, Click on The National Show, then Click on the Stable Form)

Forms are also available from the Show Website: [www.nationalsidesaddleshows.co.uk](http://www.nationalsidesaddleshows.co.uk)

or you can email: admin@nationalsidesaddleshows.co.uk or apply by post with a SAE

Permanent Stables may not be booked for storage, sleeping in, as dog kennels, etc.

The NSSSG reserves the right, at their discretion, to retain Permanent Stables for Competitors including those who are Disabled, Overseas and travelling long distances, etc.

**THE NATIONAL SIDE SADDLE SHOW FORMAL PRESENTATIONS  
FOR THE EQUITATION CHAMPIONSHIPS  
AND THE RIDERS OF THE YEAR**

**SATURDAY MOUNTED – IN THE INTERNATIONAL ARENA**

*Before The Sir Lancelot Final*

**CYGNET CHAMPIONSHIP** - Champion & Reserve

**JUNIOR YOUNG RIDER NOVICE CHAMPIONSHIP** - Champion & Reserve

**JUNIOR NOVICE EQUITATION CHAMPIONSHIP** - Champion & Reserve

*(Note: If the Junior Young Rider Novice Champion is also the winner of the Junior Novice Championship, they are Junior Young Rider Novice Champion AND Junior Novice Champion. If they are second, they are Junior Young Rider Champion & Junior Novice Champion, etc)*

**JUNIOR YOUNG RIDER OPEN EQUITATION CHAMPIONSHIP** - Champion & Reserve

**JUNIOR OPEN EQUITATION CHAMPIONSHIP** - Rider of the Year & Reserve

*(Note: If the Junior Young Rider Open Champion is also the winner of the overall Junior Open Championship, they are Junior Young Rider Champion AND Junior Side Saddle Rider of the Year. If they are say second, they are Junior Young Rider Champion & Junior Reserve Rider of the Year, etc)*

**ADULT NOVICE EQUITATION CHAMPIONSHIP** - Champion & Reserve

**ADULT INTERMEDIATE EQUITATION CHAMPIONSHIP** - Champion & Reserve

**ADULT OPEN EQUITATION CHAMPIONSHIP** - Champion

**ADULT AMATEUR EQUITATION CHAMPIONSHIP** - Champion & Reserve

**ADULT OVERSEAS EQUITATION CHAMPIONSHIP** - Champion & Reserve

*Following the Ride Off*

**SATURDAY MOUNTED – IN THE INTERNATIONAL ARENA**

**SIDE SADDLE RIDER OF THE YEAR** - Rider of the Year, reserve, 3<sup>rd</sup> and 4<sup>th</sup> place

**ALL OTHER PRIZES, TROPHIES & AWARDS  
TO BE COLLECTED FROM THE SHOW OFFICE  
PLEASE SEE NOTICE BOARDS FOR WINNERS**

*Including the*

**The Meg Cup**, donated by **The Late Mrs J Bredin**, will be awarded to the Adult Member and **The Overdraft Tankard**, donated by **Mrs R Oultram**, will be awarded to the Junior Member **gaining the** most points in Equitation Qualifying Classes **between the** previous and this year's Show.

**The Stable Manager's Tankard**, donated by **Mr A Bainbridge**, awarded to the most caring groom observed during the Show.

**The Pattie Curtis Memorial Trophy**, donated by **SSA Area 14**, will be awarded to the Junior Member with the most attentive groom observed during the Show.

**The Talland School of Equitation Training Bursary**, donated by **Mrs P Hutton**, in memory of The Late Pattie Curtis, will be awarded to the Junior Member, whose Groom won the Pattie Curtis Memorial Trophy. The £250 Bursary to be taken at Talland in whatever field the recipient wishes.

**Overseas Riders** will receive a **Memento**, sponsored by **The Side Saddle Association**.

**The Overseas Rider** gaining the most points (excluding Team Competitions and Overseas sections) at the Show on a single horse that is also domiciled outside the UK will receive a **Sash**, sponsored by **The Side Saddle Association**.

**Area Team Competitions:** Please see Area Team Competitions (Page 5, 32)

**SSA PERFORMANCE POINTS AWARDS PRESENTATIONS**  
**Unmounted in the International Arena at 16.45 on Friday**

*The Side Saddle Association*  
**NATIONAL SHOW POINTS TROPHIES**

**Competitors must declare they wish to take part in the Points Trophies Competitions, at the time of Entry**, by ticking the relevant Boxes on the Entry Form for the relevant Trophies. Those Competitors will be given a Points Card in their Competitor Envelope. **Points Cards MUST BE completed and lodged with the SSA Hon Gen Secretary, Sally Lane, in the Show Office, within 30 minutes of the last class of the Show with any accompanying paperwork/letters.**

In all Classes and/or Sections if there are Adult/Junior Sections within classes (EXCEPT Area Team Competitions, Pairs, Family Horse/Pony and Fancy Dress) Competitors may claim points: 10 for 1<sup>st</sup>, 9 for 2<sup>nd</sup>, 8 for 3<sup>rd</sup>, 7 for 4<sup>th</sup>, 6 for 5<sup>th</sup> and 5 for 6<sup>th</sup> and 4 for completing the Class, regardless of placing. In the case of a tie, the Winner is the competitor with the greatest number of first places. In case of a further tie, the Winner is the competitor who has completed the most Classes and in case of a further tie, the Trophy shall be held for equal periods of time by each of the tied Competitors. Winners will be notified and Trophies sent to them after the Show; results will be published in the SSA Newsletter and Winners invited to be formally presented with their Trophy at the next SSA AGM.

**Black Fen Royalist Bowl A (Class 801)**, donated by **The Late Mrs J Bredin**, will be awarded to the Adult Member winning the most points at this year's Show.

**Middleton Cup (Class 802)**, donated by the **Middleton Family**, will be awarded to the Junior Member aged under 13 on 1<sup>st</sup> January of this year winning the most points at the Show.

**Bredin Cup (Class 803)**, donated by **The Late Mrs J Bredin**, will be awarded to the Junior Member aged between 13 and 17 on 1<sup>st</sup> January of this year winning the most points at the Show.

**Sideways Salver (Class 804)**, donated by **Mr & Mrs A Bainbridge**, will be awarded to the Member winning most points at this year's Show who rides side saddle 90% of the normal year. Area Chairmen are required to confirm their Member's eligibility, in writing, either prior to or at the time of Competitors collecting numbers at the Show. *(For every 100 minutes riding time, 90 minutes should be ridden side saddle!)*

**Billette Mackie Memorial Rose Bowl (Class 805)**, will be awarded to the Member winning the most points at the Show on a single horse or pony which, at the Entries Closing date and throughout the Show, is wholly owned by the Member or her/his immediate family. (Leased or borrowed horses/ponies are excluded).

**Mica Trophy (Class 806)**, donated by **Mrs J Foden**, will be awarded to the Member aged 50 years or over on 1<sup>st</sup> January of this year, winning the most points at this year's Show.

**PRIZE MONEY & AWARDS**

**The NSSSG reserves the right to reduce the number of Awards and to cancel or amalgamate under-subscribed classes**

Trophies, Rosettes, Prizes, Prize Money and Awards are indicated with each individual Class and/or Championship

**ANY UNCOLLECTED**

Trophies, Rosettes, Prizes, Prize Money, Awards, Dressage & Equitation Mark Sheets and /or Music by the end of the Show will be forfeited

**Should you wish to have a Formal Photograph taken of yourself and/or with any Trophies you have won with the Judge, Sponsor or Donor, etc., please see Emmpix, the Official Show Photographers, who will be happy to assist you**

## AREA TEAM COMPETITIONS

All Area Team Trophies & Rosettes to be collected from the Show Office except the Area Team Relay when Awards will be presented in the Ring

Area Team Rules and Entry Forms for the Area Team Competitions are available from the Show Office and [www.nationalsidesaddleshow.co.uk](http://www.nationalsidesaddleshow.co.uk).

Area Entries will be sent to Area Chairmen after Entries have closed.

Please ensure that you make your Team Entries by the times stated with the SSA Hon Gen Secretary, Sally Lane, in the National Show Office.

The Winning Dressage Team receives the **Kear-Colwell Bowl** donated by **Mrs V Kear-Colwell**.

The Winning Equitation Team receives the **Treasurer's Bowl** donated by the **Late Mr R James**.

The Winning Equitation Jumping Team receives the **Elegant Airs Trophy** donated by **Area 12**.

Competitors in the 3 highest placed Teams in the Dressage, Equitation & Equitation Jumping receive Rosettes sponsored by **The Friends of the NSSSG**. The winning team of the Team Relay receives the **Hutton + Rostron Armada Dish**. All team members receive Rosettes sponsored by **Friends of the NSSSG**.

### The British Show Horse Association – [www.britishshowhorse.org](http://www.britishshowhorse.org)

The British Show Horse Association – [www.britishshowhorse.org](http://www.britishshowhorse.org)  
The BSHA Mears Ladies Show Horse Championship  
to be held at the 2022 BSHA National Championships

First Prize Money: £200

The 4 highest placed **Small & Large Riding Horse, Hack** (exceeding 148cm but not exceeding 160cm), **Large & Small Show Hunter** and **Cob** (exceeding 148cm), Mare or Gelding, 4 years and over, ridden by a lady SSA Adult Member aged 15 or older, qualify for **The 2022 BSHA Championship Show Mears Ladies Show Horse Championship**. SSA Members who qualify for The Ladies Show Horse Championship, will not be required to join the BSHA in order to compete in any Side Saddle class at the BSHA National Championship Show.

**The BSHA Ladies Hunter of the Year Championship**  
to be held at the 2022 BSHA National Hunter Championship Show

The 4 highest placed **Small & Large Show Hunters**, Mares or Geldings, 4 years and over, exceeding 148cm will qualify for **The BSHA Ladies Hunter of the Year Championship**. To compete at the BSHA Hunter Championship Show, Owners, Riders and Horses must be members of the BSHA, or purchase a Day Ticket.

**BSHA DAY TICKETS:** *Non-Members may purchase up to a maximum of 2 Day Tickets per Exhibitor, per Horse, per Rider, per Season. A Day Ticket will allow entry into Amateur, Home Produced, In-Hand, Novice, Working, Young Rider and Open Affiliated classes only, but will NOT allow entry into RIHS or HOYS qualifying classes. Horses registered on a Day Ticket do not require a JMB height certificate. Competitors can apply for a Day Ticket by downloading an application form, or apply online on the BSHA website.*

*Horses competing in the Sport Horse Breeding of Great Britain classes at their Affiliated Shows cannot compete in Hack, Cobs and Riding Horse classes at the same show, on the same day and vice versa. This does not apply to SHB (GB) Ridden Sport Horse classes.*

## CHAPS (UK) 2022 Championship Show – [www.chapsuk.com](http://www.chapsuk.com)

At the National Side Saddle Show, the highest placed coloured (in accordance with CHAPS rules) in the **Cob, Coloured** and **3 Mature Rider Classes**, ridden by a lady, riding side saddle, aged 16 or over on 1<sup>st</sup> January of the current year qualifies for the Side Saddle Championship at the CHAPS (UK) 2022 Championship Show. In order to compete at the CHAPS (UK) Championship Show the horse must be registered and the owner/rider must become a showing member, prior to the CHAPS Championship Show commencing. (*CHAPS Membership is not required to achieve qualification at the National Side Saddle Show*). Chaps (UK) affiliation no 22-0000

## The Veteran Horse Society – [www.veteran-horse-society.co.uk](http://www.veteran-horse-society.co.uk) 2022 National Veteran Championships

The National Side Saddle Show **Veteran Classes** are affiliated to the VHS.  
Please see individual class wording.

The VHS offers a **Special Rosette & Golden Ticket Qualification** for the National Veteran Championships Supreme Final 2022, to the highest placed horse/pony 15 years old or over, owned and ridden by an **AMATEUR** in the:

- **Adult Open Equitation Championship,**
- **Junior Open and Young Rider Open Championships.**

Following golden ticket qualification at the National Side Saddle Show, competitors are required to become VHS Members and register their horse/pony within 21 days of qualifying in order to go forward to compete at the VHS Supreme Final when they must compete riding side saddle. VHS Membership is not required for the National Side Saddle Show.

**For full details about VHS Golden Ticket Qualification, please contact:**

Mrs C King, National Veteran Championships Show Organiser  
12 Wheelers Way, Felbridge, East Grinstead, West Sussex, RH19 2QJ  
M: 07977 002710 [Email: champs@veteran-horse-society.co.uk](mailto:champs@veteran-horse-society.co.uk)

## *Robert Jenkins*

*Master Saddler, SMS Qualified Saddle Fitter, Side Saddle Specialist*

- Bespoke Side Saddles
- Pony Pilches
- Accessories: threefold girths, balance straps, leathers, stirrup irons & fleece covers

**Malvern Saddle Co Ltd**  
**12 New Venture Enterprise Centre**  
**Park Boulevard**  
**Worcester WR2 4GD**

[sales@malvernsaddlecompany.co.uk](mailto:sales@malvernsaddlecompany.co.uk)  
[www.malvernsaddlecompany.co.uk](http://www.malvernsaddlecompany.co.uk)



Are proud to print this publication

01449 721599 / [enquiries@gippingpress.co.uk](mailto:enquiries@gippingpress.co.uk) / [www.gippingpress.co.uk](http://www.gippingpress.co.uk)

# THE NATIONAL SIDE SADDLE SHOW GROUP (NSSSG) DRESSAGE RULES

1. **Dressage & Freestyle to Music Classes will be run under BD rules**, unless otherwise stated below.
2. **Under NSSSG rules Rider Turnout is as for Equitation Class Turnout.** Adults not wearing safety hats do so at their own risk
3. **Dressage Class Trophies, Special Awards and place rosettes** must be collected from the Show Office.
4. **Under NSSSG rules, where the Arena construction** makes it impossible for Competitors to ride round the outside, before the judge's signal to enter is sounded, Competitors may ride inside the Arena. Where a 40m x 20m Arena has been created within a 60m x 20m Arena, Competitors are permitted to ride in the entire Arena. Competitors may enter at A from inside or outside the Arena.
5. **Times** - See General Show Rules. Every effort will be made to accommodate Competitors' requests for which pony/horse is ridden first, **provided** requests are made when entering.
6. **Bridles, etc.** - BD Rules concerning biting and saddlery, **with the exception** that Double or Pelham bridles are permitted in the Freestyle to Music Classes. Walk & Trot, Preliminary and Novice tests may only be ridden in Snaffle bridles. For the Jumping Phase of the Dressage with Jumping classes, Standing Martingales and Market Harboroughs are not permitted. No protection of the horses' legs is permitted in any NSSSG/BD Dressage Test.
7. **Scoring** - In accordance with BD competitions, the total marks for a test will be converted into a percentage & the highest percentage score will be the Winner. In the event of equality of marks/percentages, the horse/pony with the higher collective marks shall take the higher placing. If the collective marks are also equal, the place will be shared. In the Freestyle to Music Classes in the event of equality, the competitor with the highest artistic impression marks will be the Winner.
8. **Commanded Tests** - Dressage tests may be commanded (except for the Dressage to Music, Rococo and Caro Cripps).
9. **Commanders must be appropriately dressed, wearing a hat.**
10. **BD Dressage Sheets** - Test sheets may be obtained from the British Dressage Office, Telephone 02476 698830 or [www.britishdressage.co.uk](http://www.britishdressage.co.uk)
11. **Score Sheets** for the RDA/SSA Intro Test can be obtained by sending an SAE to the NSSSG Show Office or from the Show Website [www.nationalsidesaddleshow.co.uk](http://www.nationalsidesaddleshow.co.uk)
12. **Second Entries** for rides in dressage classes will be accepted provided the class is not full. A waiting list will be kept, giving priority to first rides in the event of cancellations or withdrawals. Competitors with a wait-listed second entry may declare which horse is to be ridden to the NSSSG Show Office **NO LATER** than 12 noon on the Monday of the week preceding the Show.
13. **Freestyle to Music Competitors** are required to hand in their music to the Show Office or Commentary Box **on collection of number** before the start of the Class (**AND COLLECT AFTERWARDS**). Music must be marked with the Competitor's Name, Number and Class Number.
14. **Music Licences are not required** at Bury Farm Equestrian Village.
15. **Dressage with Jumping Rules**
  - a) Dressage Phase to be judged in accordance with BD Rules and the Jumping Phase NSSSG Rules adopted from BS. A fall of horse or rider or a 3rd disobedience incurs elimination.
  - b) Competitors must wear a hat to current Safety Standard or above for the Jumping Phase.
  - c) Jumping will incur penalties; 1<sup>st</sup> Disobedience - 4 penalties, 2<sup>nd</sup> - 8, 3<sup>rd</sup> - Elimination. Knocking down any part of a fence, including a wing - 4 penalties.
  - d) The Winner shall be the competitor with the highest number of good marks. In the event of a tie the dressage score takes precedence followed by the fastest jumping time.

**Please regularly check your emails (including your Junk Box)  
the Show Website [www.nationalsidesaddleshow.co.uk](http://www.nationalsidesaddleshow.co.uk)  
& check the SSA Facebook Page in case of queries or updates**



## FRIDAY DRESSAGE CLASSES

**In all Classes/Sections the competitor receiving the highest percentage score shall be the winner of the Trophies indicated in individual class wording except the Dressage with Jumping, see Dressage Rules**

**Each Section eg 1A & 1B in Classes 1 – 10 will receive Place Rosettes from 1<sup>st</sup> to 6<sup>th</sup>  
EXCEPT**

**In Class 4 where there are 3 Sections, Adults 4A and Juniors 4B & 4C  
and in Class 8 where there are 4 Sections, Adults 8A & 8B and Juniors 8C & 8D  
Place Rosettes from 1<sup>st</sup> to 6<sup>th</sup> will be awarded to**

**the highest placed Adult and highest placed Junior  
You must enter the correct Section to ensure eligibility  
for Class Trophies and Awards**

**No combination of rider/horse/pony may enter more than one Section  
except in Class 7**

### **CLASS 1 The Just-So Elegant Walk and Trot Dressage**

**Section 1A Lead Rein:** RDA/SSA Intro Test 1 (2012) Arena 20m x 40m Entry Fee: £18.00

**Section 1B Non L/R:** BD Intro Test A (2008) Arena 20m x 40m Entry Fee: £18.00

**Judge:** Mrs A Kempner (Surrey)

Open to all horses/ponies, regardless of BD points. Riders any age. The same horse/pony/rider combination may not compete in classes 2 to 8 inclusive. The overall winner, regardless of the test ridden receives the **Kim Reed Cup** donated by **Kim Reed**. The **Highest placed in each Section** receive **Special Rosettes & Awards**, donated by **Miss P Doran & Ms H Staples**. Unplaced Lead Rein (LR) Competitors will receive a rosette.

### **CLASS 2 The Area 8 Native Breed Dressage**

**Section 2A Adults:** BD Prelim Test 12 2005 (rev 2016) Arena 20m x 40m Entry Fee: £18.00

**Section 2B Juniors:** BD Prelim Test 12 2005 (rev 2016) Arena 20m x 40m Entry Fee: £18.00

**Judge:** Mr D Steans (Northants)

Open to horses/ponies of Mountain and Moorland type, regardless of BD points. Riders any age. The overall winner receives the **Waverhead Black Magic Memorial Trophy**, donated by **The Brocklebank Fell Pony Stud**.

### **CLASS 3 The Informed Bitting Restricted Preliminary Dressage**

**Section 3A Adults:** BD Prelim Test 18 2002 (rev 2016) Arena 20m x 40m Entry Fee: £18.00

**Section 3B Juniors:** BD Prelim Test 18 2002 (rev 2016) Arena 20m x 40m Entry Fee: £18.00

**Judge:** Mrs R Collins (Berks)

Open to all horses/ponies who have not been placed 1<sup>st</sup> or 2<sup>nd</sup> in any pure dressage Class at the National Side Saddle Show. Riders any age. The highest placed **Adult** receives the **Huntingdon Salver** and the highest placed **Junior** receives the **Malvern Cup**.

### **CLASS 4 The racehorseownership.com Open Preliminary Dressage**

**Section 4A Adults:** BD Prelim Test 19 2008 (rev 2016) Arena 20m x 60m Entry Fee: £18.00

**Section 4B&C Juniors:** BD Prelim Test 19 2008 (rev 2016) Arena 20m x 60m Entry Fee: £18.00

**Judge:** Mrs R Collins (Berks)

Open to all horses/ponies, regardless of BD points. Riders any age. The highest placed **Adult** receives the **Newark Cup**. **Section 4B; Junior** riding a pony not exceeding 148cm (14.2hh) receives **Patterned Mug A** donated by the **Late Mr L Moul**, and **Section 4C: Junior** riding a horse/pony exceeding 148cm (14.2hh) receives **Patterned Mug B**, donated by the **Late Mr L Moul**. **Place Rosettes to 6<sup>th</sup> place** donated by **Ms H Williams**.

## FRIDAY

### CLASS 5 The SSA Area 14 Restricted Novice Dressage

**Section 5A Adults:** BD Novice Test 28 (2008) Arena 20m x 40m Entry Fee: £18.00

**Section 5B Juniors:** BD Novice Test 28 (2008) Arena 20m x 40m Entry Fee: £18.00

**Judge:** Miss P Doran (Kent)

Open to all horses/ponies who have not been placed 1<sup>st</sup> or 2<sup>nd</sup> in any pure dressage class at the National Side Saddle Show. Riders any age. The highest placed **Adult** receives the **Sue Brenton Memorial Trophy**, donated by **Area 8**. The highest placed **Junior** receives the **Executive Jet Trophy** donated by **The Senior Family**.

### CLASS 6 The Open Novice Dressage in Memory of Llanarth Hornpipe

**Section 6A Adults:** BD Novice Test 38 (2005) Arena 20m x 60m Entry Fee: £18.00

**Section 6B Juniors:** BD Novice Test 38 (2005) Arena 20m x 60m Entry Fee: £18.00

**Judge:** Mrs A Kempner (Surrey)

Open to all horses/ponies, regardless of BD points. Riders any age. The highest placed **Adult** receives the **Welford Salver**, donated by **Mrs R James**. The highest placed **Junior** receives the **Vicarage Farm Rosebowl** donated by **Mr & Mrs P Gillespie**.

### CLASS 7 The Dawson Family in Memory of the Late Clarissa Dawson Open Elementary & Medium Dressage

**Section 7A** BD Elementary Test 43 (2006) Arena 20m x 60m Entry Fee: £18.00

**Section 7B** BD Medium Test 61 (2002) Arena 20m x 60m Entry Fee: £18.00

**Judge:** Mrs L Roberts (Warks)

Open to all horses/ponies, regardless of BD points. Riders any age. **The same combination of rider/horse/pony may enter both sections.** The highest placed Competitor riding the **Elementary Test** receives the **Area 2 Salver**, donated by **Area 2**, The highest placed Competitor riding the **Medium Test** receives the **Hassage Salver**, donated by **Mrs HGM Leighton** and both receive **Sashes** donated by **The Dawson Family**.

### CLASS 8 The EmmPix.co.uk Photography Dressage & Jumping

**All Sections:** BD Preliminary Test 7 (2002 rev 2016) Arena 20m x 40m

**Section 8A Adults:** Max height of fences 60cm (2'0") (No doubles) Entry Fee: £20.00

**Section 8B Adults:** Max height of fences 75cm (2'6") (No doubles) Entry Fee: £20.00

**Section 8C Juniors:** Max height of fences 60cm (2'0") (No doubles) Entry Fee: £20.00

**Section 8D Juniors:** Max height of fences 75cm (2'6") (No doubles) Entry Fee: £20.00

**Judges: Test:** Mr D Steans (Northants); **Jp Pen:** Miss H Lyons (Bucks)

Open to all horses/ponies, regardless of BD points, riders any age. Regardless of the height jumped, the highest placed **Adult** receives **The Tessa Mitchell Trophy**, donated by **Mrs T Mitchell**. Regardless of the height jumped, the highest placed **Junior** receives **The Taylor Junior Perpetual Trophy**, donated by **Mr R Taylor**.

For all general enquiries about

### *The Side Saddle Association*

Please visit:

[www.sidesaddleassociation.co.uk](http://www.sidesaddleassociation.co.uk)

Or contact the SSA Hon Gen Secretary:

Ms SM Lane

E: [secretary@sidesaddleassociation.co.uk](mailto:secretary@sidesaddleassociation.co.uk)

or T: 01455 208345

The Lodge, Glebe Farm, Broughton Astley,  
Leics., LE9 6PG



## FRIDAY

### FREESTYLE TO MUSIC CLASSES

Unless otherwise stated in NSSSG rules, run under BD Rules

#### **CLASS 9 The Piano Man Junior Freestyle to Music**

**Section 9A** BD Freestyle Prelim (2016) Arena 20m x 60m

Entry Fee: £19.00

**Section 9B** BD Freestyle Novice (2019) Arena 20m x 60m

Entry Fee: £19.00

**Judge:** Miss P Doran (Kent)

Open to all horses/ponies regardless of BD points, ridden by a Junior, regardless of the test ridden. The **Overall Winner** receives the **Thank You Quaich**, donated by **Mrs Helen Campbell** and **Miss Muriel Hay**. The **1<sup>st</sup>** and **2<sup>nd</sup>** placed receive **Sashes** donated by **Brave Pants**.

#### **CLASS 10 The Warners Adult Freestyle to Music**

**Section 10A** BD Freestyle Prelim (2016) Arena 20m x 60m

Entry Fee: £19.00

**Section 10B** BD Freestyle Nov (2019) Arena 20m x 60m

Entry Fee: £19.00

**Section 10C** BD Freestyle Elem (2019) Arena 20m x 60m

Entry Fee: £19.00

**Section 10D** BD Freestyle Med (2016) Arena 20m x 60m

Entry Fee: £19.00

**Judge:** Miss P Doran (Kent)

Open to all horses/ponies, regardless of BD points, ridden by an Adult. Regardless of the test ridden, the **Overall Winner** receives the **Joie de Vivre Bronze**, donated by her family in memory of **The Late Mrs L Gray**, a **Sash** sponsored by and a Bottle of Gin donated by **Warners**.

### RESTRICTED TURNOUT

#### **CLASS 11 The Jean Dunt Restricted Turnout**

**Section 11A Adults**

Entry Fee: £17.00

**Section 11B Juniors**

Entry Fee: £17.00

**Judge:** Miss C Parkin (Leics)

Open to all horses/ponies and restricted to Adults and Juniors who have not entered any Equitation Championship Classes at this year's Show. Lead Rein permitted (all Lead Rein Competitors will receive a Rosette to be collected from Show Office). **1<sup>st</sup>** to **6<sup>th</sup>** rosettes in each section. The Highest Placed **Adult** receives the **Inquisitive Bronze**, donated by **Mrs F Penn**. The Highest Placed **Junior** receives the **Roberts Trophy**, donated by **Mrs P Roberts** and a **Knitted Side Saddle Habit dressed Bear** made by **Mrs K Conly, KCD Krafts**.

### **CLEAR ROUND JUMPING (PLEASE PAY AT THE ARENA)**

**Friday 1.30 am to 2.30 pm in the Hutton + Rostron Arena**

**Sunday 9.00 am to 11.30 am in the Hutton + Rostron Arena**

£5.00 for 1 round or £8.00 for 2 rounds - Clear Round Rosettes

**Competitors MUST BE APPROPRIATELY DRESSED & Numbers MUST BE WORN**

**Competitors may receive assistance but Assistants must be appropriately dressed**

### **The National Side Saddle Show Group is extremely grateful for the Donations received from The Friends of the NSSSG**

And their support and assistance with the general overheads of running the show, contributing to the Venue Hire, Special Rosettes, Awards, Radio hire, Show jump & Working Hunter Fence hire, the Raffle, Travel, Accommodation, Catering, etc.

## FRIDAY

### NEWCOMERS EQUITATION

1. All **Competitors** will receive **rosettes** donated by **The Worshipful Company of Saddlers**.
2. There are no qualifying points required to enter this class.
3. Competitors will be judged individually and riding times given. Shows may not be commanded or performed on a Lead Rein.
4. Competitors must not start until the bell has rung. Competitors should then proceed down the Arena from A and give a Freestyle Show not exceeding 3 minutes timed from their entry at A to final halt/salute.
5. No initial salute is required and the Show must include Walk, Trot and Canter on both reins. Competitors will leave the Arena at A.
6. 2 Judges will assess the Correctness of the Rider's position and the influence on the Horse/ Pony's way of going and the Stability and Balance of the Saddle. 1 Judge will be positioned at "C" and 1 on the ¾ line. A 3rd Judge will assess Competitors' Turnout immediately after each individual show.

#### **Class 12 The Alison Henderson-Owen Newcomers Equitation**

**Section 12A Adults** Arena 20m x 40m Entry Fee: £20.00

**Section 12B Juniors** Arena 20m x 40m Entry Fee: £20.00

**Judges: C:** Mrs F Penn (Warks); ¾ **Line:** Miss D Atkinson (Suffolk)

**T/O:** Mrs S Davies (Co Durham)

Open to Competitors who have not previously competed in Newcomers or Equitation Championship Classes at a National Side Saddle Show. 1<sup>st</sup> to 6<sup>th</sup> rosettes in each section. The highest placed **Adult** receives the **Scottish Side Saddles Cup**, donated by **Mrs S Justice-Vose**. The highest placed **Junior** receives the **Pye Trophy**, donated by **Katie Foreman**. The highest placed **Adults & Juniors** receive **Side Saddle Covers** donated by **SSA Area 12**. The **Overall Winner** receives the **Roger Philpot Newcomer Trophy and a Memento**, donated in his memory, by **Texas Ladies Aside**.



**The Worshipful Company of Saddlers**

[www.saddlers.org](http://www.saddlers.org)

has generously donated

**A Bridle to the Junior Side Saddle Rider of the Year**  
**And Special Rosettes for all Competitors entering**  
**The Newcomers Equitation Class**



**SATTLEREI**

**SASKIA VON EHRENKROOK**  
**MEISTERBETRIEB**



**Establish the connection between horse and rider**  
**Specialized in side saddles since 1996**

Denmark Ryttergabsvej 46 6330 Padborg  
**Telephone** +49 171 31 65 777  
[www.sattlerei-sve.de](http://www.sattlerei-sve.de) [info@sattlerei-sve.de](mailto:info@sattlerei-sve.de)

## FRIDAY

### THE ROCOCO AND CARO CRIPPS CLASSES

- 1. Entries accepted** – The combined number of entries accepted for the two classes will be 25 and accepted on a first received basis. Additional entries will be wait listed.
- 2. Horse/Pony Tack etc** - Side Saddles, Bridles, Boots, Costumes, etc., worn, should be safe and fit correctly, but may be decorated, appropriately.
- 3. Rider's Costumes, Headwear, Props & Helpers** - Any Costumes or Footwear may be worn. If non-standard footwear is worn it is entirely at the Competitor's own risk. Juniors **MUST** wear a hat to conform with current safety standard hats at all times. Adult's hats which do not conform to current Safety Standards or above and any Props/Helpers incorporated, are entirely at the Competitors' own risk.
- 4. Tests** – Performances may not be verbally commanded or performed on the lead rein.
- 5. Scoring** – 2 Judges will **USE DUPLICATE MARK SHEETS** and **EACH** allocate 100 marks for: **a) Way of Going & Harmony** between Rider & Horse/Pony **20**, **b) Music**, which appropriately enhances the Pas Seul & the Performance **20**, **c) Costume**, which is most suitable to the Rider, Horse/Pony & the Performance **20** and **d) Overall Entertainment, Performance & Presentation 40**. The 2 Scores will be added together and turned into a Percentage to achieve the final Result. In the event of equality of marks, the highest marks for Overall Entertainment, Performance & Presentation, achieved from **both Judges**, shall be the Winner; if not conclusive the highest marks for Way of Going and Harmony between Rider & Horse/Pony, achieved **from both Judges**, shall be the Winner; if not conclusive the results shall be declared a tie.
- 6. Music and Précis** – Both **must be handed in at the Show Office on collection of number** before the start of the Class, be **CLEARLY** marked with the Competitor's Name, Number, Class Number **AND** any specific instructions concerning the music.
- 7. Both classes** - will be run as a Freestyle to Music Class in a 20m x 60m Arena. Riding Times will be given and should be ridden in a Costume themed to match and enhance the Music used. A brief précis about the Pas Seul (Max 50 words) **must be** submitted. Music must be between 4½ and 5 minutes and will be timed from opening to closing halt. Penalties will be incurred for exceeding the time allowed.
- 8. REQUIREMENTS:** Walk, Trot and Canter on both reins at any level; all types of movements may be used but degree of difficulty may not always gain higher marks and must be correctly executed.
- 9. OPTIONAL:** Static Props may be carried/used, 1 or 2 Static props and Helpers may be incorporated **BUT ALL PROPS/HELPERS** may only enter the Arena, and be removed from, at the same time as and within the time allowed for each competitor (7 minutes including performance time).

### MOUNTED PRESENTATIONS FOR ALL COMPETITORS IN BOTH CLASSES

All Sashes & Rosettes sponsored by **The Oakley-Pope Family**  
The **top 8 Competitors** will be called in reverse order for **Place Rosettes**  
**The Winner and Reserve** receive a **Sash**

All Participants in the **Performances** receive **Special Rosettes**  
The **Competitors**, who in the opinion of the Sponsors or their Representative present the **Best Costume** and **Best "Wow Factor"** receive **Special Rosettes**

#### **CLASS 13 The Oakley-Pope Family Rococo Memorial Junior Pas Seul**

**Judges:** (C) Mrs K Downing (Northants); (E) Mrs B Robertson-Flynn (Oxon) Entry Fee: £19.00  
Open to all horses/ponies, ridden by a Junior. The **Winner** receives the **Rococo Trophy**, donated by **The Oakley-Pope Family**.

#### **CLASS 14 The Oakley-Pope Family Caro Cripps Memorial Adult Pas Seul**

**Section 14A Adults aged under 40** on 1<sup>st</sup> January of the current year Entry Fee: £19.00  
**Section 14B Adults aged 40 & over** on 1<sup>st</sup> January of the current year Entry Fee: £19.00  
**Judges:** (C) Mrs K Downing (Northants), (E) Mrs B Robertson-Flynn (Oxon)  
Open to all horses/ponies ridden by an Adult. The **Winner** receives the **Caro Cripps Memorial Bowl**, donated by **The Oakley-Pope Family**. The **Norman Jennings Memorial Trophy**, donated by **Mr & Mrs D Bird**, will be presented to the highest placed **Mature Rider aged over 40 years**.

## FRIDAY

### THE RIGHT SHOULDER BACK F/STYLE EQUITATION TRAINING CLASS

1. Riders will be judged individually and given riding times (10 mins). Shows may be commanded.
2. Riders will enter the Arena at A and give a Freestyle Show not exceeding 3 minutes timed from entry to final halt/salute. Riders must not start until the bell has rung. No initial salute required. After final halt/salute, the rider will make their way to C for turnout to be judged.
3. Having been given verbal feedback and received their mark/comment sheet and rosette, Riders leave the Arena at A.
4. A SSA Panel Instructor, positioned at C, will watch the Show and assess the Poise, Suppleness & Effectiveness of the Rider 40% the Harmony of Horse & Rider and Way of Going 40% and after the Show, the Turnout of Horse, Tack and Rider, 20%.

### Class 15 The Right Shoulder Back Freestyle Equitation Training Class

**Section 15A Show must include Walk & Trot on both reins** Entry Fee: £20.00

**Section 15B Show must include Walk, Trot & Canter on both reins** Entry Fee: £20.00

**Judge:** Mrs S Davies (Co Durham) Arena 20m x 40m

Open to Adult, Junior and Lead Rein Riders. **Donated Rosettes** will be awarded to **Riders achieving over 70% Ruby, 65% - 70% Sapphire, 58% - 64% Amber and under 57% Emerald.** All RDA Riders will receive a rosette donated by **Mr S Pope.**

## THE HISTORICAL

### CLASS 16 The Major & Mrs T Pashen Historical Side Saddle Class

**Judges:** Mrs K Downing (Northants), Mrs J Pryor (Suffolk) Entry Fee: £15.00

Open to Adults and Juniors, this class will be judged at walk. Lead Rein permitted (unplaced Lead Rein Competitors will receive a Rosette). The Judge may inspect Competitors' attire and horse/pony's tack closely, for Historical Accuracy, when the class is lined up. Competitors are required to submit 2 copies of a completed form about their costume and 2 photographs of the copied costume, to confirm authenticity with their Entry Form, or at the Show (at least 2 hours before the start of the class). The forms will be used by the Judges and Commentator and available from the Show Office or the Show Website [www.nationalsidesaddleshow.co.uk](http://www.nationalsidesaddleshow.co.uk). These **MUST** be clearly marked with the Competitor's name and number. The **Winner** will receive **The Lady of the Manor Trophy**, a **Necklace** donated by **"Elsie hates Harvie" Jewellery Makers**, a **Sash** sponsored by **Major & Mrs T Pashen** and the first 10 Competitors will receive **Rosettes**, sponsored by **Friends of the NSSSG.**

## 2023 CLASSICAL LADIES QUALIFIER

### CLASS 17 The Tessa Mitchell 2023 Classical Ladies Side Saddle Qualifier

**Judges:** Mrs R Collins (Berks), **T/O:** Miss D Atkinson (Suffolk) Entry Fee: £20.00

Open to SSA Adult Members aged 18 and over on January 1<sup>st</sup> of the current year, riding side saddle, on horses exceeding 148cm (14.2hh). To be judged 25% conformation and action, 25% manners & way of going, 25% rider, and 25% turnout of horse & rider, by a SHBGB, BSHA, BSPS, P(UK) or SSA Panel Judge. Judges may request a short show but will not ride exhibits; horses will not be stripped. Traditional habits must be worn. Fancy Dress and Period Costumes NOT permitted. **N.B.** Silk hats are permitted to be worn in this class **AT ANY TIME OF THE DAY.** Judges are requested to use the mark sheet provided. The highest placed horse/rider combination **qualifies for the Final to be held at the 2023 National Side Saddle Show** and receives a qualification card which must be presented when entering the 2023 final. The **Winner** will receive **The Tessa Mitchell Rose Bowl, Place Rosettes to 10<sup>th</sup> place**, donated by **Mrs T Mitchell and Mr L Mitchell.** *This class is a QUALIFIER for The 2022 BSHA Championship Show Horse Championship see page 5.*

## FRIDAY

### RIDING CLUB HORSE/PONY PERFORMANCE CLASSES

1. Competitors will enter the arena and will walk, trot and canter as a group.
2. Competitors will be required to give an individual show including walk, trot and canter on both reins, during which 3 fences will be jumped in any order with at least 1 fence being jumped off the left rein.
3. The class will be judged on the show (including the approach, take off, style, landing and get away from each fence), the manners of the horse/pony and its suitability for the rider.
4. The Judge will not ride exhibits and Conformation will not be taken into consideration.
5. At their discretion, the Judge may alter the height of the fences during the course of the class.

#### **CLASS 18 The Acrecliffe Equestrian Riding Club Performance Horse**

**Judge:** Mrs K Downing (Northants)

Entry Fee: £15.00

Open to horses exceeding 158cm (15.2hh), riders any age. Max height of fences 84cm (2'9").

The **Winner** receives the **Ice Magic Bronze**, donated by **Mr A Tait**.

#### **CLASS 19 The Dreammaker Performance Horse/Pony**

**Judge:** Mrs K Downing (Northants)

Entry Fee: £15.00

Open to horses/ponies not exceeding 158cm (15.2hh), riders any age. Max height of fences

70cm (2'3"). The **Winner** receives the **Equilibra Trophy**, donated by **Mrs M McLoughlin**.

#### **CLASS 20 The Friends of the NSSSG Junior Rider Riding Club Performance Pony**

**Judge:** Mrs K Downing (Northants)

Entry Fee: £15.00

Open to horses/ponies not exceeding 158cm (15.2hh), ridden by a Junior. Max height of

fences 38cm (1'3"). The **Winner** receives the **SSA Salver C**.

#### **RC PERFORMANCE HORSE/PONY CHAMPIONSHIP**

*Open to the 1<sup>st</sup> and 2<sup>nd</sup> in Classes 18 to 20*

*The Champion receives the **Talisman Trophy**, donated by **Mrs D Headley** and a **Sash** donated by **Team Banks**.*

### HORSEMANSHIP CLASSES

1. To be judged in accordance with the current SSA Members' Handbook Side Saddle Equitation Qualifying Class judging procedure, EXCEPT no cantering is permitted in Class 21 EXCEPT in individual Shows.
2. **6 Competitors from each class**, and/or 3 from the Adult Class if split due to entries, will be invited to go forward for final judging in the International Arena (For time, please see the latest Time Table).
3. Final Judging Ride Off: Competitors will enter the Arena, work in open order & perform their own freestyle show for 2 - 3 minutes.

#### **CLASS 21 The Lady Luck Junior Horsemanship**

**Judges:** Mrs Y Huber (Sussex); **T/O:** Mrs A Smyth (Herts)

Entry Fee: £17.00

Open to Juniors, and Lead Rein Competitors, who have not been placed 1<sup>st</sup> or 2<sup>nd</sup> in the

Junior Open Equitation Championship class **at the last 3 National Shows**. The **Winner**

receives a **SASH** sponsored by the **Lady Luck**. **Unplaced competitors** receive **Special Rosettes** sponsored by **The Friends of the NSSSG**.

#### **CLASS 22 The Lady Luck Adult Horsemanship**

**Judges:** Mrs Y Huber (Sussex); **T/O:** Mrs A Smyth (Herts)

Entry Fee: £17.00

Open to Adults who have not taken part in the Ride Off for the Title of Rider of the Year or

been placed 1<sup>st</sup> or 2<sup>nd</sup> in an Adult Open or Adult Intermediate Championship classes **at the**

**last 3 National Shows**. The **Winner** receives a **SASH** sponsored by the **Senior Lady Luck**.

**Unplaced competitors** receive **Special Rosettes** sponsored by **The Friends of the NSSSG**.

## FRIDAY / SATURDAY

### CLASS 23 The Area 6 Lady Guinevere Junior Concours d'Élégance

**Judge:** Mrs Y Huber (Sussex)

Entry Fee: £15.00

Open to Junior members. Competitors will be asked to walk, trot and canter around together before giving either an individual or group show. The **Winner** receives **The Lady Guinevere Perpetual Challenge Trophy** presented by the **Thomas Family**. **1<sup>st</sup> to 6<sup>th</sup> placed Rosettes**, sponsored by **SSA Area 6** and receive a **Sash**, and all competitors receive **Commemorative Rosettes**, donated by **Mr & Mrs S Marchbank**.

## SATURDAY

### THE CYGNET EQUITATION CHAMPIONSHIP

**Mounted Presentations to Champions and Reserve Champion on Saturday evening**  
**Other Rosettes to be collected from the Show Office**

1. Competitors may not enter any other Equitation Championship class at this year's National Show and be Junior Members of the SSA. No qualifications are required to enter this Championship.
2. Open to Lead Rein competitors but Handlers must be appropriately dressed including safe footwear and appropriate headgear.
3. Competitors' turnout will be judged immediately after they have ridden the test. No change of saddlery, clothing or equipment or outside assistance whatsoever is permitted between riding and turnout phases except with the permission of the judge. Competitors will not receive Turnout Awards.
5. Non-Lead Rein Competitors tests may be commanded, but Callers must be appropriately dressed.
6. The Judge, positioned at "C" will assess the Correctness of the Rider's position and the influence on the Pony's way of going and the Stability and Balance of the Saddle. On completion of the test Competitors make their way to C so the Judge can closely inspect/mark the Pony/Rider's Turnout, before being invited to leave the Arena at A.
7. Riding times will be given - See General Show Rules.
8. In accordance with NSSSG rules, where the arena construction makes it impossible for Competitors to ride round the outside, before the judge's signal to enter is given, they may ride inside the Arena. Competitors may enter at A from the inside or outside the Arena.
9. The Cygnet Equitation Championship Test is printed in the current year's SSA Members' Handbook and is available from [www.nationalsidesaddleshows.co.uk](http://www.nationalsidesaddleshows.co.uk) and [www.sidesaddleassociation.co.uk](http://www.sidesaddleassociation.co.uk).
10. The Champion and Reserve Champion will receive their Awards at the Mounted Presentation on Saturday and must be escorted, by an appropriately dressed handler.

### CLASS 51 The Rob Jenkins Cygnet Championship

**Judge:** Mrs K Downing (Northants)

Arena 20 x 40m

Entry Fee: £16.00

This class is open to Lead Rein and Non-Lead Rein Juniors who have attained their 5<sup>th</sup> but not their 9<sup>th</sup> birthday on 1<sup>st</sup> January of the current year's show. The **Champion** receives the **Rob Jenkins Plaque**, a **Memento Trophy** and a **Sash**, the **Reserve Champion** receives a **Memento Trophy** and a **Sash** and all **Competitors** receive **Rosettes** donated by **Mr R Jenkins, Master Saddler**. The **Jenny Childs Scholarship**, sponsored by **Mrs J Childs**, will be awarded to the **1<sup>st</sup>** (£75), **2<sup>nd</sup>** (£50) and **3<sup>rd</sup>** (£25) placed competitors towards side saddle training and/or side saddle fitting.

### 2022 National Side Saddle Show Memento Plaques

*Sponsored in loving memory of*

*Valerie Lewis by her family*

**Will be given to all Competitors, Judges and Stewards  
attending the Show**



## SATURDAY

### *The Side Saddle Association*

#### EQUITATION & TURNOUT AND EQUITATION JUMPING CHAMPIONSHIP CLASSES

Please see Mounted Presentations for Championship Awards on Saturday evening  
All other Trophies, Awards and Rosettes to be collected from the Show Office

Please enter the correct Class Section and **ONLY ONE SECTION** in each class  
to ensure eligibility for Awards you are entitled to

(eg: If entering the Junior Open but are a Young Rider (aged under 14) and also aged under 13 and eligible for the Marilyn Toogood, enter 52C; if entering the Adult Novice and eligible for the Sandon, enter 60B, etc., and you will automatically be noted as being eligible for specific awards)

- a) **Qualifications & Rules** for the Championship Classes are in the current **Member's Handbook**.
- b) **Championship Results** are achieved by adding the total Equitation percentage marks (which include the Turnout marks) and total Equitation Jumping percentage marks (which include the Penalties marks) together and dividing by four to achieve the final percentage. In the event of a tie, the Competitor(s) with the highest percentage score totals in the Equitation riding phase shall take the highest place(s). Only those Competitors entered in the Rider of the Year Championships riding the same horse/pony shall have percentage marks included in the overall results.
- c) **Place rosettes to 10<sup>th</sup> place** in each class. Sections within classes do not receive rosettes/awards, unless indicated.
- d) In the **Turnout Phase** in each of the Equitation Championship classes **the top 6 Competitors** will receive **rosettes**, sponsored by **The Side Saddle Association**.
- e) **All Competitors** will receive **Qualifier Rosettes**, sponsored by **The Side Saddle Association** (unless entered in the Unqualified Overseas Section).
- f) **Overseas Members** competing in the Overseas Section of the Equitation Championships will receive 1<sup>st</sup> - 6<sup>th</sup> Place Rosettes, sponsored by **The Side Saddle Association**.
- g) The Adult Overseas Champion shall be the Adult Overseas Member, riding the same horse or pony, with the highest percentage score totals from the Adult Open, Adult Intermediate and Adult Novice Equitation Championship classes and the Adult Open, Adult Intermediate and Adult Novice Equitation Jumping Classes.

#### EQUITATION AND TURNOUT CLASS RULES

1. Competitors may only enter one Equitation/Turnout Championship class, which can be entered as an individual class, may only ride one horse and must select, **at the time of entry**, the correct section to ensure eligibility for Prizes and Awards.
2. Overseas Members - please read rules for "Overseas Competitors" in the Members' Handbook, Show Rules & Conditions, Championship Rules and Class wording.
3. Competitors' turnout will be judged immediately after they have ridden the test. No change of saddlery, clothing or equipment or outside assistance whatsoever is permitted between riding and turnout phases of the Equitation classes, except with the permission of the judge.
4. Two Judges will assess the Correctness of the Rider's position and the influence on the Horse/ Pony's way of going and the Stability and Balance of the Saddle. One Judge will be positioned at "C" one and one on the  $\frac{3}{4}$  line for the Junior Open, Junior Novice, Adult Intermediate & Adult Novice Tests, at "C" and one at "B" for the Adult Open Test.
5. Championship Equitation tests may not be commanded or performed on a Lead Rein.
6. A 'Newcomer' is a Member who has not previously competed in an Equitation Championship class at any National Show.
7. Riding times will be given - See General Show Rules.
8. In accordance with NSSSG rules, where the arena construction makes it impossible for Competitors to ride round the outside, before the judge's signal to enter is given, they may ride inside the Arena. Where a 40m x 20m Arena has been created within a 60m x 20m Arena, Competitors are permitted to ride in the entire Arena. Competitors may enter at A from the inside or outside the Arena.
9. **Late Entries will not be accepted for the Equitation or Equitation Jumping Classes**, unless qualified after entries close.
10. **The Championship Equitation Tests** are printed in the **current Members' Handbook** and are available from the National Show and The Side Saddle Association Websites.

## SATURDAY

### EQUITATION JUMPING RULES

**Penalties Judge:** Miss H Lyons (Bucks)

1. **Competitors may only enter one Equitation Jumping Class**, which can be entered as an individual class and may only ride one horse and must select, **at the time of entry**, which height they wish to jump within their respective Equitation Jumping Class.
2. **Late Entries will not be accepted.**
3. **Riding times will be given, see General Show Rules.**
4. **In the event of a tie, the Bonus marks (excluding penalties) will take precedence, followed by the Overall General Impression marks.**
5. **Please ensure you enter the correct section for the height you wish to jump at when entering.**

### JUNIOR YOUNG RIDER & JUNIOR OPEN CHAMPIONSHIPS AWARDS

**Competitors competing in Classes 52 (please enter relevant Section) & 53**

*(Note: If the Junior Young Rider Open Champion is also the winner of the Junior Open Championship, they are Junior Young Rider Champion **AND** Junior Side Saddle Rider of the Year. If they are say second, they are Junior Young Rider Champion & Junior Reserve Rider of the Year, etc)*

**The Junior Side Saddle Rider of the Year** receives a **BRIDLE**, donated by **The Worshipful Company of Saddlers**, the **LADY MARSH CHALLIS MEMORIAL SALVER**, donated by the **Sears Family**, a **Sash** and a **MEMENTO**, sponsored by **The Side Saddle Association**.

**The Reserve Junior Side Saddle Rider of the Year** receives the **KATIE SALVER** donated by **The Late Mrs J Bredin** a **Sash**, sponsored by **The Side Saddle Association** and an **Embroidered Side Saddle Cover** donated by **SSA Area 12**.

**The 3<sup>rd</sup> to 10<sup>th</sup> placed Competitors** receive **PRIX D'EXCELLENCE** rosettes, sponsored by **The Side Saddle Association**, to be collected from the Show Office.

**Veteran Horse Society Wild Card Qualification** – See Page 6

**The Junior Young Rider Open Champion** shall be the Member aged under 14 on 1<sup>st</sup> January of the current year and receives the **Junior Young Rider Open Championship Shield**, donated anonymously, and a **SASH**, sponsored by **The Side Saddle Association**.

**The Young Rider Open Reserve Champion** receives a **SASH**, sponsored by **The Side Saddle Association**.

**The 1<sup>st</sup> to 6<sup>th</sup> placed Overseas Competitors** receive **Place Rosettes**, sponsored by **The Side Saddle Association**.

### CLASS 52 The Barham Family Junior Open & Young Rider Open Equitation & Turnout

**Section 52A** Qualified UK Juniors not eligible for other awards      Entry Fee: £21.00

**Section 52B** Qualified UK Young Riders under 14 on 01/01      Entry Fee: £21.00

**Section 52C** Qualified UK Young Riders under 13 on 01/01      Entry Fee: £21.00

**Section 52D** Qualified Overseas Juniors not eligible for other awards      Entry Fee: £21.00

**Section 52E** Qualified Overseas Young Riders under 14 on 01/01      Entry Fee: £21.00

**Section 52F** Qualified Overseas Young Riders under 13 on 01/01      Entry Fee: £21.00

**Section 52G** Unqualified Overseas Juniors      Entry Fee: £21.00

**Judges:** C: Mrs Y Huber (Sussex);  $\frac{3}{4}$  line: Miss R Rosser (Wales)

**T/O:** Ms V Hogg (Northumberland)

Arena 20m x 60m

This class is also the first element of the **Junior Open** and **Young Rider Open Championships**. The **Winner** receives the **LSSA Salver A**. The Highest Placed **Member aged under 13** on 1<sup>st</sup> January of the current year receives the **Marilyn Toogood Rose Bowl**, donated by **Mrs M Storey**. The Winner of the **Turnout Phase** receives the **Longclose Gulthwaite Salver**, donated by **Mrs S Thorne**.

## SATURDAY

### CLASS 53 The Barham Family Junior Open & Young Rider Open Equitation Jumping

**Section 53A** 53cm (1'9") max height, 38cm (1'3"), max spread, first 2 fences max height 46cm (1'6")

**Section 53B** 70cm (2'3") max height, 46cm (1'6"), max spread, first 2 fences max height 61cm (2'0")

**Judges:** **Bonus marks:** Mrs K Downing (Northants); Mrs S Davies (Co Durham)

Entry Fee: £20.00

This class is also the second element of the **Junior Open** and **Young Rider Championships**. Competitors must enter the height section they wish to jump at when entering. Max number of fences 8. Regardless of the height of the fences, the **Winner** receives the **Victoria Forbes Rose Bowl**, donated by **Mrs V Forbes**.

### JUNIOR NOVICE & YOUNG RIDER NOVICE CHAMPIONSHIP

**Competitors competing in Classes 54 (please enter relevant Section) & 55**

*(Note: If the Junior Young Rider Novice Champion is also the winner of the Junior Novice Championship, they are Junior Young Rider Champion **AND** Junior Novice Champion. If they are say second, they are Junior Young Rider Champion & Junior Reserve Novice Champion etc)*

The **Junior Novice Champion** receives the **MILLWOOD CUP**, donated by **The Late Miss V Millwood**, a **Sash**, sponsored by **The Side Saddle Association** and an **Embroidered Side Saddle Cover** donated by **SSA Area 12**.

The **3<sup>rd</sup> to 10<sup>th</sup> placed Competitors** receive **PRIX D'EXCELLENCE** rosettes, sponsored by **The Side Saddle Association**, to be collected from the Show Office

The **Junior Young Rider Novice Champion** shall be the Member aged under 14 on 1<sup>st</sup> January of the current year and receives the **Junior Young Rider Novice Championship Shield**, donated anonymously, a **Sash**, sponsored by **The Side Saddle Association** and an **Embroidered Side Saddle Cover** donated by **SSA Area 12**.

The **Young Rider Novice Reserve Champion** receives a **SASH** sponsored by **The Side Saddle Association**.

The **1<sup>st</sup> to 6<sup>th</sup> placed Overseas Competitors** receive **Place Rosettes**, sponsored by **The Side Saddle Association**,

### CLASS 54 The Martin Collins Enterprises Ltd Junior Novice & Young Rider Novice Equitation & Turnout

**Section 54A** Qualified UK Juniors not eligible for other awards Entry Fee: £21.00

**Section 54B** Qualified UK Young Riders under 14 on 01/01 Entry Fee: £21.00

**Section 54C** Qualified UK Young Riders under 11 on 01/01 Entry Fee: £21.00

**Section 54D** Qualified Overseas Juniors not eligible for other awards Entry Fee: £21.00

**Section 54E** Qualified Overseas Young Riders under 14 on 01/01 Entry Fee: £21.00

**Section 54F** Qualified Overseas Young Riders under 11 on 01/01 Entry Fee: £21.00

**Section 54G** Unqualified Overseas Juniors Entry Fee: £21.00

**Judges:** C: Mrs K Downing (Northants); **¼ Line:** Miss P Doran (Kent)

**T/O:** Mrs S Davies (Co Durham)

Arena 20m x 40m

This class is also the first element of the **Junior Novice** and **Young Rider Novice Championships**. The **Winner** receives the **Silver Shell**, donated by **The Late Mrs E Skelton**. The **Highest Placed Member** aged under 11 on 1<sup>st</sup> January of the current year's show receives the **Stephanie Bowl**, donated by **Mr A Bainbridge**. The **Winner** of the **Turnout Phase** receives **The Longclose Guilthwaite Trophy**, donated by **Mrs S Thorne**.

The National Side Saddle Show Group does its best to avoid errors or the publication of misleading information. However, it can accept responsibility neither for the accuracy of the information published nor any commercial arrangements entered into.

## SATURDAY

### **CLASS 55 The Martin Collins Enterprises Ltd Junior Novice Equitation Jumping**

**Section 55A** 38cm (1'3") max height, 30cm (1'0"), max spread, first 2 fences max height 30cm (1'0")

**Section 55B** 53cm (1'9") max height, 38cm (1'3"), max spread, first 2 fences max height 46cm (1'6")

**Judges: Bonus marks:** Mrs J Cope (Oxon); Mrs F Penn (Warks) Entry Fee: £20.00

This class also is the second element of the **Junior Novice and Young Rider Championships**. Competitors must state which height they wish to jump when entering. Max number of fences 8. Regardless of the height jumped, the **Winner** receives the **Limited Edition Shield**, donated by **Mrs E Garner**.

### **ADULT OPEN EQUITATION CHAMPIONSHIP AWARDS**

**Competitors competing in Classes 56 (please enter relevant Section) & 57**

The **Side Saddle Rider of the Year** receives the **AGE OF ELEGANCE BRONZE** donated by **The Side Saddle Association**, a **RUG**, donated by **The Old Hunting Habit**, a **SASH** and a **MEMENTO**, sponsored by **The Side Saddle Association**.

The **Reserve Side Saddle Rider of the Year** receives the **SCOTTISH QUACH**, donated by **Mrs R James** in memory of **The Late Lt Col AW Rose**, a **Sash**, sponsored by **Side Saddle Association** and an **Embroidered Side Saddle Cover** donated by **SSA Area 12**.

The **3<sup>rd</sup> placed Competitor** receives **ROSEBOWL A**, **4<sup>th</sup> placed Competitor** receives **ROSEBOWL B**, donated by **The Late Mr R Philpot**, and **3<sup>rd</sup> & 4<sup>th</sup>** a **Sash**, sponsored by **The Side Saddle Association** and an **Embroidered Side Saddle Cover** donated by **SSA Area 12**.

*The Side Saddle Rider of the Year shall be determined from a Ride-Off. The four highest placed in the Adult Open Equitation Championship qualify. They will be required to ride Freestyle including movements from the Open Equitation Test, on their own and each of the other riders' horses/ponies. If any rider(s) declines to take part, the place will be passed down to the next rider. Should you qualify for the "Ride Off" you will need someone to hold your horse between rides. Please ensure they have the appropriate clothes with them but hats are not required.*

All **Competitors placed 5<sup>th</sup> to 10<sup>th</sup>** receive **PRIX D'EXCELLENCE** rosettes, sponsored by **The Side Saddle Association**, to be collected from the Show Office.

The **1<sup>st</sup> to 6<sup>th</sup> placed Overseas Competitors** receive **Place Rosettes**, sponsored by **The Side Saddle Association**.

The **Adult Open Champion** receives the **Accolade Plate**, donated by **SSA Area 4** and a **Sash**, sponsored by **The Side Saddle Association**.

The **Adult Amateur Champion** receives the **PHILPOT AMATEUR CUP**, donated by the **Late Mr R Philpot**, and a **SASH**, sponsored by **The Side Saddle Association**.

The **Adult Amateur Reserve Champion** receives a **Sash**, sponsored by **The Side Saddle Association**.

*For the Amateur Championship, "Amateur" is defined as a person who does not:*

- a) Engage in breeding, livery, buying, selling, dealing or hiring horses as a means of livelihood.*
- b) Accept remuneration for employment in connection with horses in racing, showing, livery stable or riding (instruction at Pony Club and Riding Club excepted).*
- c) Show a horse owned or sponsored by a company or commercial firm, or a horse/pony for which his or her immediate family accepts livery or training charges from a person outside the immediate family.*

**Veteran Horse Society Wild Card Qualification for Amateurs** – See Page 6.

The **Adult Open Overseas Champion** and **The Reserve Adult Open Overseas Champion** receive a **Sash**, sponsored by **The Side Saddle Association**.

The **1<sup>st</sup> to 6<sup>th</sup> placed Overseas Competitors** receive **Place Rosettes**, sponsored by **The Side Saddle Association**.

## SATURDAY

### CLASS 56 The Derby Family SSA Adult Open Equitation & Turnout

**Section 56A** Qualified UK Adults not eligible Amateur Entry Fee £21.00

**Section 56B** Qualified UK Adults eligible for Amateur Entry Fee £21.00

**Section 56C** Qualified Overseas Adults not eligible for Amateur Entry Fee £21.00

**Section 56D** Qualified Overseas Adults eligible for Amateur Entry Fee £21.00

**Section 56E** Unqualified Overseas Adults Entry Fee £21.00

**Judges:** **C:** Mrs R Collins (Berks); **E:** Miss J Macdonald (Glos)

**T/O:** Mrs A Melhuish (Cornwall) Arena 20m x 60m

This class is also the first element of the **Adult Open Championship**. The **Winner** receives the **Ben Hur Bronze**, donated by **Mrs D Barham**, The **Winner** of the **Turnout Phase** receives the **Big Bopper Bowl**, donated by **Miss D Parker**, the **Runner Up** of the **Turnout Phase** receives the **Longclose Gulthwaite Trophy**, donated by **Mrs S Thorne**.

### CLASS 57 The Derby Family SSA Adult Open Equitation Jumping

**Section 57A** 84cm (2'9") max height, 70cm (2'3"), max spread, first 2 fences max height 76cm (2'6")

**Section 57B** 91cm (3'0") max height, 76cm (2'6"), max spread, first 2 fences max height 84cm (2'9")

**Judges: Bonus marks:** Mrs J Cope (Oxon); Mrs S Davies (Co Durham) Entry Fee: £20.00

This class is also the second element of the **Adult Open Championship**. Competitors must state which height they wish to jump when entering. Max number of fences 10. Regardless of the height jumped, the **Winner** receives the **Welham Bowl**, donated by **Mrs S Sherwin**.

## ADULT INTERMEDIATE EQUITATION CHAMPIONSHIP AWARDS

Competitors competing in Classes (please enter relevant Section) 58 & 59

The **Adult Intermediate Champion** receives the **CITY OF LEICESTER SALVER**, a **RUG** donated by **The Old Hunting Habit** and a **Sash**, sponsored by **The Side Saddle Association**.

The **Adult Intermediate Reserve Champion** receives a **Sash**, sponsored by **The Side Saddle Association** and an **Embroidered Saddle Cover** donated by **SSA Area 12**.

The **3<sup>rd</sup> to 10<sup>th</sup> placed Competitors** receive **PRIX D'EXCELLENCE** rosettes, sponsored by **The Side Saddle Association**, to be collected from the Show Office.

The **Adult Intermediate Overseas Champion** and **The Reserve Adult Intermediate Overseas Champion** receive a **Sash**, sponsored by **The Side Saddle Association**.

The **1<sup>st</sup> to 6<sup>th</sup> placed Overseas Competitors** receive **Place Rosettes**, sponsored by **The Side Saddle Association**.

### CLASS 58 The Vanessa Hood SSA Adult Intermediate Equitation & Turnout

**Section 58A** Qualified UK Adults Entry Fee £21.00

**Section 58B** Qualified Overseas Adults Entry Fee £21.00

**Section 58C** Unqualified Overseas Adults Entry Fee £21.00

**Judges: (C):** Mrs Y Huber (Sussex); **¾ line:** Miss R Rosser (Wales)

**T/O:** Ms V Hogg (Northumberland) Arena 20m x 60m

This class is also the first element of the **Adult Intermediate Championship**. The **Winner** receives the **Jim Stones Coaches Plaque**, donated by **Areas 18 & 19**. The **Winner** of the **Turnout Phase** receives the **Lonclose Gulthwaite Trophy** donated by **Mrs S Thorne**.

**PLEASE SUPPORT THE SHOW'S FUND RAISING RAFFLE  
DRAWN ON SATURDAY EVENING**

Prizes welcomed – Please leave in the Show Office  
Don't forget to your buy your tickets and collect your Winnings on Sunday!

## SATURDAY

### **CLASS 59 The Vanessa Hood SSA Adult Intermediate Equitation Jumping**

**Section 59A** 76cm (2'6") max height, 61cm (2'0"), max spread, first 2 fences max height 70cm (2'3")

**Section 59B** 84cm (2'9") max height, 70cm (2'3"), max spread, first 2 fences max height 76cm (2'6")

**Judges: Bonus marks:** Miss J Macdonald (Glos); Mrs A Melhuish (Cornwall)

Entry Fee: £20.00

This class is also the second element of the **Adult Intermediate Championship**. Competitors must state which height they wish to jump when entering. Max number of fences 9. Regardless of the height jumped, the **Winner** receives the **Valdons Bronze**, donated by **Miss V Seddon**.

### **ADULT NOVICE EQUITATION CHAMPIONSHIP AWARDS**

**Competitors competing in Classes 60 (please enter relevant section) & 61**

The **Adult Novice Champion** receives the **KITTYHAWK TROPHY**, donated by **The Late Mrs D Reynard-Holt**, a **RUG** donated by **The Old Hunting Habit** and a **SASH** sponsored by **The Side Saddle Association**.

The **Adult Novice Reserve Champion** receives a **Sash**, sponsored by **The Side Saddle Association** and an **Embroidered Side Saddle Cover** donated by **SSA Area 12**.

The **3<sup>rd</sup> to 10<sup>th</sup> placed Competitors** receive **PRIX D'EXCELLENCE rosettes**, sponsored by **The Side Saddle Association**, to be collected from the Show Office.

The **Adult Novice Overseas Champion** and **The Reserve Adult Novice Overseas Champion** receive a **Sash**, sponsored by **The Side Saddle Association**.

The **1<sup>st</sup> to 6<sup>th</sup> placed Overseas Competitors** receive **Place Rosettes**, sponsored by **The Side Saddle Association**.

### **CLASS 60 The in Memory of The Late David Owen SSA Adult Novice Equitation & Turnout**

**Section 60A** Qualified UK Adults not eligible for Sandon Entry Fee £21.00

**Section 60B** Qualified UK Adults eligible for Sandon Entry Fee £21.00

**Section 60C** Qualified Overseas Adults not eligible for Sandon Entry Fee £21.00

**Section 60D** Qualified Overseas Adults eligible for Sandon Entry Fee £21.00

**Section 60E** Unqualified Overseas Adults Entry Fee £21.00

**Judges: C:** The Hon Mrs D Gooch (Sussex); **¾ line:** Miss B Millington (Wales)

**T/O:** Miss H Barton (Leics)

Arena 20m x 40m

This class is also the first element of the **Adult Novice Championship**. The **Winner** receives the **Skelton Cup**, donated by **The Late Mrs E Skelton**. The **Highest Placed Competitor** who has not previously competed in any Equitation Championship CLASS receives the **Sandon Saddlery Cup A**, presented by **Sandon Saddlery**. The **Winner** of the **Turnout Phase** receives the **Longclose Gulthwaite Trophy** donated by **Mrs S Thorne**.

### **CLASS 61 The In Memory of The Late David Owen SSA Adult Novice Equitation Jumping**

**Section 61A** 70cm (2'3") max height, 46cm (1'6"), max spread, first 2 fences max height 61cm (2'0")

**Section 61B** 76cm (2'6") max height, 61cm (2'0"), max spread, first 2 fences max height 70cm (2'3")

**Judges: Bonus marks:** Mrs J Cope (Oxon); Mrs F Penn (Warks) Entry Fee: £20.00

This class is also the second element of the **Adult Novice Championship**. Competitors must state which height they wish to jump when entering. Max number of fences 8. Regardless of the height jumped, the **Winner** receives the **Moul Shield**, donated by **The Late Mr L Moul**.

## SATURDAY

### PONY CLASSES / FANCY DRESS

#### **CLASS 62 The King Family Junior Ridden Pony**

**Judge:** Ms V Hogg (Northumberland)

Entry Fee: £15.00

Open to Juniors riding ponies not exceeding 148cm (14.2hh) which have not been regularly placed in the top three at affiliated shows in the past 2 seasons. To be judged on the Ponies' Manners, Conformation, Type, Way of Going and Rider Ability. The **Winner** receives the **Miranda Trophy**, donated by **Mrs J Guille**.

#### **CLASS 63 The Nigel Fuller Show Pony / Pony of Show Hunter Type**

**Judge:** Ms V Hogg (Northumberland)

Entry Fee £15.00

Open to Juniors riding ponies not exceeding 148cm (14.2hh). To be judged taking into account the Ponies' Manners, Conformation, Type and Way of Going. The **Show Hunter Pony Winner** receives the **Horwood Rose Bowl**. The **Show Pony Winner** receives the **Pendley Master Model Trophy**, donated by **Miss R Allen**.

#### **CLASS 64 The Mr & Mrs M Wilkins Fancy Dress**

**Judge:** Surprise Judge to be invited

Entry Fee: £15.00

Riders any age. At least one member of an entry must ride side saddle. Lead Rein permitted. The **Winner** receives the **David Spilman Memorial Trophy**, donated by the **Spilman Family**. **Rosettes** for all **Participants**.

### RIDING HORSES, HACKS AND COBS

1. *Classes 65, 66, 67 & 68 qualify for the 2022 BSHA Championship Show Ladies Show Horse Championship, see Page 5.*
2. *The Judge will not ride exhibits but will request a short show.*

#### **CLASS 65 The Bevan Family Small Riding Horse**

**Judge:** Mrs A Smyth (Herts)

Entry Fee: £15.00

Open to horses exceeding 148cm (14.2hh) but not 158cm (15.2hh), riders any age. The **Winner** receives the **Longclose Challenge Salver**, donated by **Mrs S Thorne**.

#### **CLASS 66 The Bevan Family Large Riding Horse**

**Judge:** Mrs A Smyth (Herts)

Entry Fee: £15.00

Open to horses exceeding 158cm (15.2hh), riders any age. The **Winner** receives the **Moongold Cup**, donated by **Mrs A Small**.

### RIDING HORSE CHAMPIONSHIP

Open to 1<sup>st</sup> and 2<sup>nd</sup> placed Competitors in classes 65 & 66

The **Champion** receives a **Sash** sponsored by **The Bevan Family**

The **Winner** receives the **Rosemary Riding School Cup**,

donated by **Rosemary Riding School**

#### **CLASS 67 The Henrietta Barton Open Hack**

**Judge:** Mrs R Collins (Berks)

Entry Fee: £15.00

Open to exhibits not exceeding 160cm (15.3hh), riders any age. The **Winner** receives the **Tatlow Salver**, donated by **The Late Mr H Tatlow**.

#### **CLASS 68 The Saskia von Ehrenkrook Open Cob**

**Judge:** Mrs R Collins (Berks)

Entry Fee: £15.00

*For the 2022 CHAPS Qualification – See Page 6*

Open to all horse/ponies of show cob type, riders any age. The **Winner** receives the **Long Silver Tray**.

## SATURDAY

### HOYS SHOW HORSE QUALIFIER

1. The National Side Saddle Show and the Official Horse of the Year Show Entry Form must be completed, obtainable from [www.hoys.co.uk/competitor-zone](http://www.hoys.co.uk/competitor-zone) or [www.nationalsidesaddleshows.co.uk](http://www.nationalsidesaddleshows.co.uk).
2. This class is a qualifying class for the 2022 Horse of the Year Show. Qualification will not pass below 5<sup>th</sup> place, with the exception of the BSHA National Championship Show. Qualification will be verified by the HOYS Office.
3. Horses, Riders, Owners and Producers must be registered with and be Members of BSHA.
4. This class will be run in accordance with the general rules as set out in the HOYS rulebook, a copy of which can be downloaded from [www.hoys.co.uk](http://www.hoys.co.uk). Exhibits will be required to gallop/extend together during the Go Round phase.
5. Late Entries only accepted if accompanied by copies of the Horse's, Rider's and Owner's registration documents.
6. This is a Horse of the Year Show Qualifier, all data given upon entry of this class is provided to Grandstand Media Limited and stored on the Grandstand Entries System. For full policy details please visit [www.grandstandentries.com](http://www.grandstandentries.com).

#### CLASS 69 The All Seasons Fencing Ladies Side Saddle (HOYS) Qualifier

Including the £15.00 HOYS contribution

Entry Fee: £40.00


Non SSA Members temporary NSSSG Members Fee

£6.00

Prize Money: £45, £40, £35, £20, £10


**Judges:** Conformation: Mr N Collins (Berks); Ride: Miss E Rostron (Sussex)

This class is run under rules (as above) and open to mares or geldings, 4 years old or over, exceeding 148cm, to be ridden side-saddle by a lady, aged 15 or over. **Place Rosettes** to 10<sup>th</sup> place. The **Winner** receives a **Sash** and a **Special Rosette** and the **Highest Placed SSA Member** receives **The Len Birchenough Memorial Cup**, donated by **Miss J Boardman**. **All Seasons Fencing** presents a **Special Rosette** to the **Best Turned Out Horse and Rider**.



### All Seasons FENCING

LEADING THE FIELD



KEEPSAFE FENCING – POST & RAIL – TORNADO  
BOARDED CORNERS – STALLION PADDOCKS  
LUNGE RINGS – WATER TROUGHs – GATES

E: [richard@allseasonsfencing.co.uk](mailto:richard@allseasonsfencing.co.uk)  
M: 07876 527956  
VISIT OUR WEBSITE  
[www.allseasonsfencing.co.uk](http://www.allseasonsfencing.co.uk)



### All Seasons FENCING

LEADING THE FIELD



[www.allseasonsfencing.co.uk](http://www.allseasonsfencing.co.uk)



## SATURDAY

### MOUNTAIN & MOORLAND

#### **CLASS 70 The Friends of the NSSSG Mixed Height Pure Bred M&M**

**Judge:** Mrs K Downing (Northants)

Entry Fee: £15.00

Open to all UK Pure Bred Mountain and Moorland type ponies. Rider any age. Lead Rein permitted. No cantering permitted except in individual performances. **The Winner** receives the **Vidal Memorial Trophy**, donated by **Mrs S Davies**.

#### **CLASS 71 The Friends of the NSSSG Mixed Height Part Bred M&M**

**Judge:** Mrs K Downing (Northants)

Entry Fee: £15.00

Open to all UK Part Mountain and Moorland type ponies. Rider any age.

#### **MOUNTAIN & MOORLAND CHAMPIONSHIP**

**Open to the first and second placed competitors in classes 70 & 71**

The **Highest Placed Pure Bred** receives the **Commodore Salver**,

donated by **Mr A Bainbridge**

The **Highest Placed Part Bred** receives the **Markstakes Cosima Memorial Trophy**,  
donated by the **Truscott Family**

#### **COSTUME CONCOURS D'ÉLÉGANCE CLASSES**

1. *Competitors are required to submit a resumé, and photograph if they wish, about their costume with their Entry Form, or at the Show, at least 2 hours before the commencement of the Classes, using the form available from the Show Office or the Show Website [www.nationalsidesaddleshow.co.uk](http://www.nationalsidesaddleshow.co.uk)*
2. **Rosettes awarded to all unplaced Competitors.**
3. **The top 6 competitors at the 2022 National Side Saddle Show in both the Adult & Junior Costume Concours d'Elegance Classes will qualify for the JVJ Championship of the Costume Concours d'Elegance to be in June/July in 2023. Show venue to be confirmed**

#### **CLASS 72 The Kate Ettritch Adult Costume Concours d'Élégance**

**Judge:** Mrs A Melhuish (Wales)

Entry Fee: £15.00

Open to Adults. If there are sufficient entries, this class will be divided into sections and the divisions will be shown in the Catalogue and included in your Competitor Envelope. The 1<sup>st</sup> and 2<sup>nd</sup> Prize Winners from each section will compete in a Championship immediately following the judging of the last Section.

#### **COSTUME CONCOURS D'ÉLÉGANCE CHAMPIONSHIP**

Open to the 1<sup>st</sup> & 2<sup>nd</sup> placed Competitors in each section

The **Champion** receives the **Texas Aside Trophy**, donated by **Texas Ladies Aside**

The **Champion** will receive a **Sash** sponsored by **Miss Kate Ettritch**

#### **CLASS 73 The Lauren Aitchison Junior Costume Concours d'Élégance**

**Judge:** Miss R Rosser (Wales)

Entry Fee: £15.00

Open to Juniors, including Lead Rein competitors. No cantering permitted except in individual or group performances. The **Winner** receives the **Trophée de Paris**, donated by the **Comtesse Ph de Chabot** and **Mlle B Brigot** and a **Knitted Side Saddle Habit dressed Bear** made by **Mrs K Conly, KCD Crafts**.

### ARAB

#### **CLASS 74 The Friends of the NSSSG Ridden Pure/Part Bred/Anglo Arab**

**Judge:** Mrs A Smyth (Herts)

Entry Fee: £15.00

Open to **Pure Bred Arab**, **Part Bred Arab** and **Anglo Arab** horses and ponies of any height, riders any age. The judge will not ride exhibits, but will request a short show. The **Winner** receives the **Fifield Glyn Challenge Trophy**.

## SATURDAY / SUNDAY

### **CLASS 75 The Skelton Family Sir Lancelot Concours d'Élégance Final**

**Judges:** The Hon Mrs D Gooch (Sussex)

Entry Fee: £15.00

Open to Adults who have won a 'Sir Lancelot' rosette since the previous National Side Saddle Show. The name and date of the show must be shown when entering. The **Winner** receives the **Sir Lancelot Memorial Cup** donated by **The Skelton Family**, a **Sash, Place Rosettes to 10<sup>th</sup> place** sponsored by **The Skelton Family**. **All Competitors** receive **Finalist Rosettes**, presented in the Arena, sponsored by **Friends of the NSSSG**.

### **CLASS 76 The Friends of the NSSSG & SSA Area 11 Versatile Horse/Pony**

**Judge & Organiser:** Mrs C Croucher for Area 11 Committee (Cheshire) Entry Fee: £15.00

Open to all horses/ponies, riders any age. Lead Rein permitted (unplaced Lead Rein Competitors will receive a Rosette). Competitors will have to negotiate a series of obstacles: e.g. Open & shut a gate, post a letter. There will not be a jump. Please present yourself within the scheduled times of the class. **Safety Hats are required to be worn by all Competitors**. The **Winner** receives the **SSA Area 11 Trophy**, donated by **SSA Area 11**.

## SUNDAY

### **CONCOURS D'ELEGANCE CLASSES / CLASSICAL LADIES FINAL**

#### **CLASS 101 The Benni Rose Scented Candles Adult Concours d'Élégance**

**Judge:** The Hon Mrs D Gooch (Sussex)

Entry Fee: £15.00

If sufficient entries, this class will be divided into sections and these will be shown in the Catalogue and included in your Competitor Envelope. The 1<sup>st</sup> and 2<sup>nd</sup> from each section will compete in a Championship following the judging of the final Section. The **Highest Placed Competitor**, who is not the Winner in **each section**, wearing a **Silk Hat, Bowler Hat** or a **Safety Hat** receives a **Special Rosette**. The 3 highest placed competitors in each section, if there are 2 sections, and the 2 highest placed in each section, if there are 3 sections, receive **Benni Rose Scented Candles**.

#### **ADULT CONCOURS D'ÉLÉGANCE CHAMPIONSHIP**

Open to the 1<sup>st</sup> & 2<sup>nd</sup> placed Competitors in the Class 101 Sections

The **Winner** receives the **Huber Cup**, donated by **Mr & Mrs R Huber**

#### **CLASS 102 The SSA Area 10 Junior Concours d'Élégance**

**Judge:** Mrs H Noad (Glos)

Entry Fee: £15.00

Open to Juniors, including Lead Rein competitors. No cantering permitted except in individual or group performances. (Unplaced Lead Rein Competitors will receive a Rosette). The **Winner** receives the **Henrietta Barton Cup**, donated by **Miss H Barton**.

#### **CLASS 103 The Tessa Mitchell Classical Ladies Side Saddle Final**

Prize Money: £50, £40, £30

**Judges:** Mrs A Melhuish (Cornwall); **T/O:** Mrs H Noad (Glos)

Entry Fee: £17.00

Open to Qualified SSA Adult Members (the horse/rider combination qualifies), The name and date of the show must be shown when entering. To be judged in accordance with current SSA Handbook rules. No persons are permitted in the ring except to assist with dismounting/remounting or, at the Judge's discretion, provide other assistance. Competitors are encouraged to dismount during other competitors' individual shows. The **Champion** receives the **Tessa Mitchell Trophy**, donated by **Mrs T Mitchell**. The **Champion** and **Reserve Champion** receive **Sashes, Place Rosettes to 10<sup>th</sup> place, Mementos to 3<sup>rd</sup> place** and a **Rug** donated by **Mrs T Mitchell**. All Competitors **Finalist Rosettes**.

## SUNDAY

### LEAD REIN / FLEDGLING

#### **CLASS 104 The In Memory of The Late Valerie Lewis Lead Rein Pony & Fledgling Rider**

**Judge:** Mrs S Davies (Co Durham)

Entry Fee: £15.00

Open to ponies not exceeding 138cm (13.2hh), riders aged between 5 and 10 years on 1<sup>st</sup> January of this year, who have not competed in a YR Rider, Junior Nov or Junior Open Equitation Championship class at this or any other National SS Show. Lead rein permitted. Any conventional bridle with bit may be used. Spurs are not permitted. Habits not required. No cantering permitted except in individual performances. Horsemanship, suppleness, straightness, poise of the rider, manners and suitability of the pony will be taken into account. The **Highest Placed Rider on the Lead Rein** receives the **Barton Trophy**, donated by **Miss Henrietta Barton**. The **Highest Placed Competitor Off the Lead Rein** receives the **Skittles Mug**. All Competitors receive a **Memento**, donated by **The Lewis Family**. **Place Rosettes & Special Prizes** will be awarded to the **Lead Rein & Fledgling Sections** and all **unplaced Competitors**, sponsored by **The Lewis Family**.

### COLOURED

#### **CLASS 105 The Monks Barn Farm Coloured Horse or Pony**

**Judge:** Mrs A Melhuish (Cornwall)

Entry Fee: £15.00

*For the 2022 CHAPS Qualification – See Page 6*

Open to all coloured horses/ponies (Appaloosa, Dun, Palomino, Piebald or Skewbald, Roan, Cremello), of any type/height, who do not need to be registered, riders any age. The Judge will not ride exhibits but will request a short show. The **Winner** receives the **Sears Rose Bowl**, donated by **The Sears Family** and a **Sash** sponsored by **Monks Barn Farm**.

### GRACIOUS LADIES AND MATURE RIDERS

*Riders will be asked to give an individual show and be judged on riding ability and overall elegance.*

1. *For the 2022 CHAPS Qualification – See Page 6*
2. *All Competitors receive Rosettes, sponsored by SSA Area 5.*

#### **CLASS 106 The SSA Area 5 Philpot Flat Cap Gracious Ladies**

**Judge:** Mrs H Noad (Glos)

Entry Fee: £15.00

Open to Adults **60 years and over** on 1<sup>st</sup> January of the current year's Show. The **Winner** receives the **Doyenne Salver**, donated by **Mrs E Bainbridge**. The **Highest Placed Most Senior Rider** receives the **Hobgoblins Box**, donated by **Mrs J Pryor**.

#### **CLASS 107 The SSA Area 5 Philpot Flat Cap Mature Riders**

**Judge:** Mrs H Noad (Glos)

Entry Fee: £15.00

Open to Adults **51 years and over but under 60** on 1<sup>st</sup> January of the current year's Show. The **Winner** receives the **Golden Age Trophy**, donated by **The Late Mrs J R Roberts**.

#### **CLASS 108 The SSA Area 5 Philpot Flat Cap Nearly There Mature Riders**

**Judge:** Mrs H Noad (Glos)

Entry Fee: £15.00

Open to Adults **over 45 and under 51 years** on 1<sup>st</sup> January of this year's Show. The **Winner** receives the **There But Not Quite There Trophy**, donated by **Mrs R Oultram**.

### MATURE RIDERS CHAMPIONSHIP

Open to 1<sup>st</sup> and 2<sup>nd</sup> placed Competitors in classes 106-108

The **Champion** receives the **Mosscroft Salver**, donated by **Mr & Mrs D Gray**

The **Champion & Reserve Champion** receive **Sashes**, sponsored by **SSA Area 5**

## SUNDAY

### RIDDEN RACE HORSE

#### CLASS 109 The SSA Area 8 Ridden Racehorse (Not affiliated to ROR)

**Judge:** The Hon Mrs D Gooch (Sussex)

Entry Fee: £15.00

Open to Thoroughbred mares or geldings, 4 years old or over, any height, who have previously RACED and who **MUST** be registered with Weatherbys in their General Stud Book. Horses should be ridden in a snaffle, pelham or simple double bridle. To be ridden by an Adult. The Judge will not ride exhibits but will request a short show. **The winner** will receive a **Sash**, sponsored by **Mrs A Wells**.

#### SHOW HUNTERS

1. *The Judge will not ride exhibits but will request a short show.*
2. *These classes are Qualifiers for the 2022 BSHA Show Horse Championship, see Page 5.*
3. *If large entries for Class 111 are received, the class will be split into A & B sections and the B Section will be open to Horses exceeding 168cm (16.2hh) and both Sections eligible for the Championship.*

#### CLASS 110 The Showing Journal Small Show Hunter

**Judge:** The Hon Mrs D Gooch (Sussex)

Entry Fee: £15.00

Open to horses exceeding 148cm (14.2hh) but not exceeding 158cm (15.2hh), riders any age. The **Winner** receives a **Silver Cup A**, donated by **The Late Mr L Moul**.

#### CLASS 111 The Bebb-Evans Large Show Hunter

**Judge:** The Hon Mrs D Gooch (Sussex)

Entry Fee: £15.00

Open to horses exceeding 158cm (15.2hh), riders any age. The **Winner** receives a **Sash** sponsored by **The Bebb-Evans Family** (see the *Championship Wording if the class is split*), the **Fernedge Crystal Bowl**, donated by **Fernedge Financial Services Ltd**.

#### SHOW HUNTER CHAMPIONSHIP

Open to 1<sup>st</sup> & 2<sup>nd</sup> placed Competitors in classes 110 & 111 (111 A&B if the Class is split)  
The Highest placed entered in Class 111 A or B receives the **Fernedge Crystal Bowl** and a **Sash** sponsored by **The Bebb-Evans Family** (if class 111 is split)

**The Overall Champion** receives the **Thorne Salver**, donated by **Mrs S Thorne**.



**emmpix.co.uk**  
Emma Gann Photography & Design  
Equine and Event Photography

*10th Anniversary!*

Official Photographer to the  
National Side Saddle Show since 2011

emma@emmpix.co.uk  
07854 044 562

 emmpix Photography

kevan@emmpix.co.uk  
07975 899890

## SUNDAY

### VETERAN HORSE / PONY AFFILIATED TO THE VHS

1. These classes are first round Area Qualifier classes for the VHS Supreme Final: Veteran Horse of the Year 2021 and are open to VHS members and non-members.
2. The competitors placed 1<sup>st</sup> to 4<sup>th</sup> in each age section (15-19, 20-24, 25+) of the Area Qualifier classes qualify for the corresponding class at VHS Regional Finals. VHS Members will have their VHS Showing card signed whilst non-members will receive a card, which can then be exchanged for a signed showing card when applying for VHS membership. Regional Finals are open to VHS Members only.
3. In each class, at the Judge's choice, a qualification card & rosette will be given to the Young Rider entitling them to enter the Young Rider Championship at the National Veteran Open Championships.
4. No galloping. **No spurs or dummy spurs are permitted**, and no cantering is permitted except in individual performances. Competitors must ride side saddle.
5. The age of the horse/pony must be displayed on the bridle.

#### CLASS 112 The Friends of the NSSSG Pre-Veteran Horse/Pony

**Judge:** Miss E Rostron (Sussex)

Entry Fee: £15.00

Open to horses/ponies aged 15 – 19 years, riders any age. Lead Rein permitted (Lead Rein Competitors will receive a Rosette). The **top 3 Competitors** will receive **VHS Rosettes**, donated by **Mrs C King**. The **Winner** receives the **Coombeland Sunset Gold Trophy**, donated by **Mrs M Elliott**.

#### CLASS 113 The “Johnny Be Good” Veteran Horse/Pony

**Judge:** Miss E Rostron (Sussex)

Entry Fee: £15.00

Open to horses/ponies aged 20 years or over, riders any age. Lead Rein permitted (unplaced Lead Rein Competitors will receive a Rosette). The **top 3 Competitors** in each age section (20-24 & 25 +) will receive **VHS Rosettes**, donated by **Mrs C Cameron**. The **Winner** receives the **Coombeland Sunset Gold Memorial Trophy**, donated by **Miss R Cowsls** and a **Sash**, sponsored by **Mrs F Penn**.

### VETERAN HORSE CHAMPIONSHIP

*Open to 1<sup>st</sup> and 2<sup>nd</sup> placed Competitors in Classes 112 & 113*

*The **Champion** receives the **VHS Trophy**, donated by The **Veteran Horse Society***

### FAMILY HORSE AND PONY

1. Competitors are not required to jump.
2. No rider may ride more than one pony/horse in either Class but may ride a different one.
3. Entrants to consist of one Adult and one Junior rider, at least one of who will ride side saddle.
4. **Rosettes** to the **2<sup>nd</sup> Riders** placed 1<sup>st</sup> to 6<sup>th</sup>, and a **Special Rosette** will be presented to **Gentlemen Competitors** sponsored by **Friends of the NSSSG**.

#### CLASS 114 The Jack The Unicorn Family Pony

**Judge:** Mrs S Davies (Co Durham)

Entry Fee: £15.00

Open to ponies not exceeding 153cm (15hh). The Juniors will enter the arena on the ponies together for initial judging, after which the Adult will give the show. The **Winner** receives the **Patterned Mug C**, donated by **The Late Mr L Moul**.

#### CLASS 115 The SSA Area 21 Family Horse

**Judge:** Mrs S Davies (Co Durham)

Entry Fee: £15.00

Open to horses exceeding 153cm (15hh). The Adults will enter the arena on the horses together for initial judging, after which the Junior will give the show, who must be of a suitable size and competence to control the horse. The **Winner** receives the **Rosemary Riding School Tankard B**, donated by **SSA Area 17**.

#### *The Side Saddle Association & The National Side Saddle Show Group*

Endorse the British Horse Society Code of Practice for the welfare of horses and ponies at events (*adapted by The Showing Council Dec 2018*). The full Policy is available from the Show Office.

## SUNDAY

### WORKING HUNTER / WORKING HUNTER PONY

1. *Saddlery & equipment as for Equitation Jumping Class rules (see current SSA Members' Handbook). **Front boots** of a plain colour may be worn for the jumping phase only.*
2. *Competitors must declare their intention to jump at the collecting ring before the start of the class.*
3. *The NSSSG marking method will be used, the judge will not ride exhibits but will request a short show.*
4. *Competitors may enter 2 horses and once jumped select which they wish to go forward to final judging.*
5. **Special Rosettes** for the best **jumping rounds**, sponsored by **Friends of the NSSSG**.

#### CLASS 116 The Brave Pants Beginners Working Hunter/Pony

**Judge:** Miss B Millington (Wales)

Entry Fee: £16.00

Open to ponies and horses, riders any age, but suitable for the size of animal they ride. Max height of fences 40cm (1'6"), no doubles or fillers. This class is intended to **encourage novice riders** and/or **novice horses/ponies** to have a go at jumping competitively and competitors are expected to enter in the spirit of the class. Combinations who enter this class MAY NOT enter the Open Working Hunter/Pony. The **Winner** receives the **Julia & Joanna Boardman Cup**, a **Rosette, Sash and Tie Pin** donated by **Miss J Boardman**. All entrants receive **Well Done Rosettes** sponsored by **Miss J Boardman & Friends of the NSSSG**.

#### CLASS 117 The Kate Ettritch Open Working Hunter Pony

**Judge:** Miss B Millington (Wales)

Entry Fee: £16.00

Open to ponies not exceeding 153cm (15hh), riders any age. Ponies will jump in height; ponies not exceeding 133cm (13hh) Max height 60cm (2'0"); ponies exceeding 133cm (13hh) but not 143cm (14hh) Max height 68cm (2'3"); ponies exceeding 143cm (14hh) but not 153cm (15hh) Max height 76cm (2'6"). The **Winner** receives the **Seamus Cup**, donated by **Mrs S Wilkie**. The **Highest Placed Pony not exceeding 133cm (13hh)** receives the **Schaible Memorial Cup**, donated by **The Schaible Family** and the **Clippersharp Cup**, donated by **The Goody Family**. The **Highest Placed Pony exceeding 133cm (13hh) but not exceeding 143cm (14hh)** receives the **Whistling Wind Cup**, donated by **Mrs R Bryer**. The **Highest Placed Pony exceeding 143cm (14hh), but not 153cm (15hh)** receives the **Tyree 'C' Cup**, donated by **Mr & Mrs I Comrie**.

#### CLASS 118 The Helena Hogarth, Hogarths Hotel Novice Working Hunter

**Judge:** Miss B Millington (Wales)

Entry Fee: £16.00

Open to horses exceeding 153cm (15hh), riders any age. Exhibits may not have won, under side saddle, a 1<sup>st</sup> prize of £15 or over in any Working Hunter class. Max height of fences 76cm (2'6"). The **Winner** receives the **Outlands Rose Bowl**, donated by **Mr & Mrs A Bainbridge**.

#### CLASS 119 The In Memory of Fiddlers Flight of Fancy, "Mrs Blobby" Open Working Hunter

**Judge:** Miss B Millington (Wales)

Entry Fee: £16.00

Open to horses exceeding 153cm (15hh), riders any age. Max height of fences 84cm (2' 9") in height, the spread will not exceed the height. The **Owner of the Winning Horse** receives the **Langston Cup**, donated by **The Late Mr J Langston**. The **Winning Rider** receives the **Black Fen Royalist Memorial Challenge Cup**, donated by **The Late Mrs J Bredin**. The **highest placed horse not exceeding 158cm (15.2hh)** receives the **Calway Sail-on Salver**, donated by **The Late Mrs J Turner**. The **highest placed horse exceeding 158cm (15.2hh)** receives the **SSA Square Salver B**.

#### WHP / WH CHAMPIONSHIP

Open to the 1<sup>st</sup> and 2<sup>nd</sup> placed Competitors in classes 116 - 119

The **Winner** receives the **Sandon Saddlery Cup B**

## SUNDAY

### SHOW JUMPING

1. Classes 120 – 123 to be judged under NSSSG rules, adopted from BS, Table A7 and speed 325 mpm.
2. In the event of a tie after the 1<sup>st</sup> round, there will be a jump off against the clock.
3. Those with 2 clears in classes 120 –123 not in the top 6 receive a **Rosette** sponsored by **SSA Area 4**.

#### **CLASS 120 The Oleksandra Danylevska Starter Stakes**

**Judge:** Miss H Lyons (Bucks)

Entry Fee: £16.00

Open to ponies and horses, riders any age, but must be suitable for the size of animal they ride. Fences maximum 46cm (1'6") in height. There will be no doubles or fillers. This class is intended to **encourage novice riders** and/or **novice horses/ponies**, to have a go at jumping competitively and competitors are expected to enter in the spirit of the class. Combinations who enter this class may not enter 121, 122, 123, 124.

#### **CLASS 121 The SSA Area 4 Open Pony Stakes**

**Judge:** Miss H Lyons (Bucks)

Entry Fee: £16.00

Open to ponies not exceeding 148cm (14.2hh), riders any age. Fences minimum 46cm (1'6"), maximum 61cm (2'0") in height and spread not exceeding 61cm (2'0"). There will be no doubles. The **Winner** receives the **Video Trophy**, donated by **Mr A Tait**.

#### **CLASS 122 The SSA Area 4 Horse Starter Stakes**

**Judge:** Miss H Lyons (Bucks)

Entry Fee: £16.00

Open to horses exceeding 148cm (14.2hh), riders any age. Fences minimum 61cm (2'0"), maximum height 76cm (2'6") in height, spread not exceeding 76cm (2'6"). There will be one double. Horse/Rider combinations who have been placed 1<sup>st</sup> or 2<sup>nd</sup> in the Open Stakes at a previous National Show are NOT ELIGIBLE for this class. The **Winner** receives the **Isle of Wight Cup**, donated in memory of **The Late Mr L Moul**.

#### **CLASS 123 The SSA Area 4 Open Horse & Pony Stakes**

**Judge:** Miss H Lyons (Bucks)

Entry Fee: £16.00

Open to all horses/ponies, riders any age. Fences minimum 84cm (2'9"), maximum 91cm (3') in height, spread not exceeding 91cm (3'). There will be one double or combination. The **Winner** receives the **Samcee Brown Cup**, donated by **Mrs A Melhuish**.

#### **CLASS 124 The SSA Area 4 Area Team Relay Show Jumping**

**Judge:** Miss H Lyons (Bucks)

Entry Fee per Team: £9.00

1. Please see Area Team Rules
2. There will be a defined area in which each team in turn will be held under supervision. On the start signal, rider 1 will go through the timing gates. On completion, they enter the box and rider 2 leaves, finishing in the box. This is repeated by rider 3 who will complete through the gate.
3. If either rider 1 or 2 are eliminated the next team member leaves the box, jumps the fence at which the rider was eliminated, finishes the round and then, via the Box does their own round. If rider 3 is eliminated, rider 1 (if not already eliminated) completes the course and goes through the finish gate.
4. Fences not to exceed 2'6" (76cm).

The **Winning Team** receives the **Hutton + Rostron Amada Dish**, donated by **Hutton + Rostron**.

## PAIRS

#### **CLASS 125 The Friends of the NSSSG Pairs**

**Judge:** Mrs S Davies (Co Durham)

Entry Fee: 15.00 (per pair)

Open to all Competitors. Lead rein permitted. Traditional Habits or Costumes permitted. To be ridden side by side and no cantering except in individual shows when variations may be made. At least one of the pair to ride side saddle. The **Winners** receive a **Pair of Silver Goblets**. **All Competitors** receive **Rosettes**. **Please enter as a pair only and both competitors must wear their own numbers.**

## SUNDAY

### SODA POP & CHAMPANGE CHALLENGES

#### CLASS 126 The Lewis Mitchell Soda Pop Challenge

**Judge:** Miss D Atkinson (Suffolk)

Entry Fee £15.00

Open to Juniors riding side saddle. Competitors will be given a "glass of Soda Pop" and be required to ride "as a ride" in walk and trot (no cantering permitted) on each rein. The **Winner** will be the competitor who completes with the most "Soda Pop in the glass". **All Competitors** receive **Rosettes**.

#### CLASS 127 The Andy Brown SSA Area 12 Champagne Challenge

**Judge:** Miss D Atkinson (Suffolk)

Entry Fee £15.00

Open to Adults riding side saddle. Competitors will be given a "glass of Champagne" and be required to ride "as a ride" in walk, trot and canter on each rein. **The Winner** will be the competitor who completes with **the most "Champagne" in the "glass", receives The Area 12 Ice Bucket, a Bottle of Champagne and a Champion Rosette. All Competitors** receive **Rosettes**.

#### NATIONAL SIDE SADDLE SHOW 2022 MERCHANDISE

Available for purchase On Line with your entry or under Merchandise on the Website  
[www.nationalsidesaddleshows.co.uk](http://www.nationalsidesaddleshows.co.uk) or on the hard copy entry form

**POLO SHIRTS: £21.00 ordered with entries, £28.00 posted after the Show**

**2022 Colour – Dark Green** with the SSA Logo on the front and the National Show Logo, the year and a list of all Horse/Pony names entered prior to entries closing.

Sizes available: XXXL(20), XXL(18), XL(16), L(14), M(12), S(10), XS(8).

**MAGIC MUGS: £7.50 ordered with entries or available at the Show**

When hot water added the SSA and National Show Logo appear.

**THERMAL FLASKS: £15.00 ordered with entries or available at the Show**

Engraved with the SSA and Show Logos and keep your drinks hot or cold

**CARVERY SUPPER TICKETS £20.00 & FORMAL LUNCH TICKETS: £25.00**

Must be purchased at least 2 weeks in advance of the Show

**CATALOGUES: £4.50 ordered with entries or £5.00 at the Show**



*The Side Saddle Association®*

#### **MERCHANDISE FOR SALE**

*The following items are for sale in the Show Office and throughout the year, please contact the Hon. Gen. Secretary for more details:*

- SSA Badges
- Window Stickers
- Membership Card Holder
- Stirrup/Kit Bags
- Jute Bags
- LED Light Baseball Cap



**JUST-SO**  
*Elegant*  
**Side Saddle Hire**

[www.justsoequestrianevents.co.uk/side-saddle-hire](http://www.justsoequestrianevents.co.uk/side-saddle-hire)



**THE NATIONAL SIDE SADDLE SHOW  
TRADE STAND SPACE BOOKED AT 1<sup>st</sup> APRIL, 2022**

To apply for space, please visit:

**[www.nationalsidesaddleshows.co.uk](http://www.nationalsidesaddleshows.co.uk)**

or contact: The Show Treasurer, Mrs Patricia Drake

Tel: 01359 271386 / 07860 824565 E: [treasurer@nationalsidesaddleshows.co.uk](mailto:treasurer@nationalsidesaddleshows.co.uk)

(no calls after 8pm please)

**Bear House Saddlery /  
Side Saddle Co-operative**

W: [www.bearhousesaddlery.co.uk](http://www.bearhousesaddlery.co.uk)  
E: [clare@bearhousesaddlery.co.uk](mailto:clare@bearhousesaddlery.co.uk)  
T: 07990 883010

**Eira's Equestrian Extras**

W: [www.eirasequestrianextras.co.uk](http://www.eirasequestrianextras.co.uk)  
E: [eirasequestrianextras@gmail.com](mailto:eirasequestrianextras@gmail.com)  
T: 07798 905884

**emmpix**

*Emma Gann Photography  
Official Show Photographer*

W: [www.emmpix.co.uk](http://www.emmpix.co.uk)  
E: [emma@emmpix.co.uk](mailto:emma@emmpix.co.uk)  
E: [kevan@emmpix.co.uk](mailto:kevan@emmpix.co.uk)  
T: 07854 044562 / 0795 889890

**Greens Jewellers Leicester Ltd**

W: [greensjewellers.com](http://greensjewellers.com)  
E: [shop@greensjewellers.com](mailto:shop@greensjewellers.com)  
T: 01162 926251 / 07760 668418

**Robert Jenkins, Master Saddler**

W: [www.malvernsaddlecompany.co.uk](http://www.malvernsaddlecompany.co.uk)  
E: [sales@malvernsaddlecompany.co.uk](mailto:sales@malvernsaddlecompany.co.uk)  
T: 01905 339550

**Prior Attire, Izabella Pitcher**

W: [www.priorattire.co.uk](http://www.priorattire.co.uk)  
E: [izabella@priorattire.co.uk](mailto:izabella@priorattire.co.uk)  
T: 07817 543968

**Side Saddles, Phyllie Robertson**

W: [www.sidesaddles.co.uk](http://www.sidesaddles.co.uk)  
E: [phyllierobertson@sidesaddles.co.uk](mailto:phyllierobertson@sidesaddles.co.uk)  
T: 07770 954367

**Showtime Tailoring**

W: [www.showtimetailoring.com](http://www.showtimetailoring.com)  
E: [sales@showtimetailoring.com](mailto:sales@showtimetailoring.com)  
T: 01558 824163 / 07508 819590

**SSA Merchandise & Performance Points**

*(SSA Hon Gen Secretary*

*- Ms Sally Lane)*

*(Performance Points*

*- Mrs Rebekah Marks-Hubbard)*

W: [www.sidesaddleassociation.co.uk](http://www.sidesaddleassociation.co.uk)  
E: [secretary@sidesaddleassociation.co.uk](mailto:secretary@sidesaddleassociation.co.uk)  
T: 01455 208345 / 07442 504071  
E: [sidesaddleriding@tiscali.co.uk](mailto:sidesaddleriding@tiscali.co.uk)  
T: 01303 489764



**The National Side Saddle Show Group  
is very grateful to all Advertisers, Sponsors & Supporters and  
Friends of the NSSSG, for contributing towards the general  
overheads of running the Show,  
confirmed at the time of going to print**

Acrecliffe Equestrian Centre, Miss L Aitchison, Mrs L Allen,  
All Seasons Fencing, The Anderson Family, The Banks Family,  
The Barham Family, Miss H Barton, The Bebb-Evans Family,  
Benni Rose Scented Candles, The Bevan Family, Miss J Boardman,  
Brave Pants, Mr A Brown, Mrs A Bryan-Dowell, Mrs K Byrd, Mr M Caine,  
Mrs J Childs, Mrs S Clune, Mrs K Conly (KCD Crafts), Mr & Mrs D Curphey,  
Mrs O Danylevska, Mr & Mrs G Dawson, The Derby Family,  
Mrs A Dolbey Jones, Miss P Doran, Mrs J Dunt, Easirecruit,  
Mrs S von Ehrenkrook, Elsie hates Harvie Jewellery Makers, Emmix,  
Miss K Ettrich, Mrs S Fernside, Mrs R Fifield, Friends of the NSSSG,  
Friends of the SSA Area 8, Mr N Fuller, Gipping Press, Mrs B Green,  
Mrs J Hales, Mrs A Henderson-Owen, Mrs C & Miss S Hislam, Mrs H Hogarth,  
Hogarths Hotel, Ms V Hood, Mr R Houghton, Mrs P Hutton, Informed Biting,  
Jack the Unicorn, Miss A James, Mrs R James, Mr R Jenkins, Just-So Elegant,  
Miss P Keeley, The King Family, Mr & Mrs R King, Lady Luck, Ms R Lambert,  
Mrs J Leighton, The Lewis Family, Malvern Saddle Co Ltd,  
Mr & Mrs S Marchbank, Martin Collins Enterprises Ltd, Mr L Mitchell,  
Mrs T Mitchell, Monks Barn Farm, The Oakley-Pope Family,  
The Old Hunting Habit, Major & Mrs T Pashen, Mrs F Penn, Mr S Pope,  
The Preston Family, Mrs J Pryor, Racehorse Ownership, Sharnford Tractors Ltd,  
The Showing Journal, The Side Saddle Association, Mrs L Sivelle,  
The Skelton Family, Ms H Staples, Talland School of Equitation, Mrs C  
Templeton-Walker, Mr D Tribe, Warner's, Mrs A Wells,  
Mr & Mrs M Wilkins, Ms H Williams, The Worshipful Company of Saddlers,  
& SSA Areas: 1, 2, 4, 5, 6, 7, 8, 9, 10, 11, 12, 14, 16, 21

***The Side Saddle Association***

**ON FACEBOOK** 

The SSA runs a business page and a closed group, with over 2,000 followers for each page

**The business page** is used as a one-way communication tool to post formal notices and other important information, it does not respond to messages, any queries should be forwarded via the Contact Us page on the SSA website or via email to [secretary@sidesaddleassociation.co.uk](mailto:secretary@sidesaddleassociation.co.uk)  
<https://www.facebook.com/sidesaddleassociation>

**The group page** is open to members and non-members and whilst SSA notices are posted on the page it is primarily for education and information purposes. Posts may only be placed by Area Chairmen and Area Secretaries of the Association. <https://www.facebook.com/groups/764823307610056>



**MARTIN COLLINS**  
ENTERPRISES

Setting the winning standard in equine surfaces

Sign up now for  
**news and offers**

# The National Side Saddle Show Group's (NSSSG)

## **RULES & CONDITIONS OF ENTRY**

**Admission to Bury Farm Equestrian Village (BFEV) & Classes is conditional upon acceptance of NSSSG rules and you agree to abide by them at the time of entering when you sign the declaration**

- 1. Access to the Showground** is only via designated entrance and exit points from 2.30pm on Thursday.
- 2. Barbecues** are not permitted in the Lorry Park but are permitted in the "Camping Field", providing the ground is not tinder dry.
- 3. Bicycles** may not be ridden in the stable area or around the showground during the day when classes are being run.
- 4. Child Protection** requires all persons present to take all reasonable steps to protect children from harm, discrimination, degrading treatment and to respect their rights, wishes and feelings.
- 5. Catalogues** ordered in advance will be in Competitors' envelopes and be on sale at the Show.
- 6. Classes** may be cancelled, amalgamated, prize monies and awards withheld at the discretion of the NSSSG, if classes undersubscribed. Uncollected Awards will be donated to future Shows.
- 7. Competition Rules** are as stated in the current National Side Saddle Show Schedule's class rules, SSA Members' and Affiliated Societies' Handbooks. Horses/ponies must be 4 years old or over.
- 8. Competitors' SSA Membership Category Definitions** are a **Young Rider** competitor is aged over 5 and under 14, a **Junior** competitor is aged over 5 and under 18, an **Adult** competitor is aged 18 or over on 1<sup>st</sup> January of the current year. [REDACTED] An **Overseas** competitor's normal place of residence is outside the UK.
- 9. Competitor Dispensation** for any rider with a physical impairment or Special Educational Needs who may require adaptations for competing should apply in writing, accompanied by the relevant medical evidence certificate, which externally verifies the impairment or condition, to the SSA Hon General Secretary.
- 10. Competitors' Dress** with the exception of the Pas Seuls, Costume, Fancy Dress and classes with compulsory headwear, is in accordance with the current SSA Members' and Affiliated Societies' Handbooks. Body Protectors are permitted in all classes but if a jacket is not worn (compulsory for classes when Turnout being judged), a sweater of colour similar to the apron must be worn. Overseas Competitors see Overseas Competitors. Juniors may not wear spurs in any class involving a jump.
- 11. Competitors' Envelopes** contain vital Competitor information, Numbers, Updates, Timetable changes, Judge changes, Section Allocations for relevant classes, etc. Envelopes will not be released until Points Cards, Qualification Certificates, etc., are seen and/or any Monies due are paid. **Please read all paperwork.**
- 12. Competitors' First Aid**, compulsory for all Competitors at £5 a day or £15 for the duration.
- 13. Competitors' Headwear** is in accordance with the current SSA Members' and Affiliated Societies' Handbooks. Adult Competitors must wear a hat to current Safety Standard or above, where indicated in the Class Rules and when not compulsory, wear alternative headgear at their own risk. Junior Competitors must wear a hat to current Safety Standard, or above in all classes.
- 14. All Competitors are required to be fully paid up Members of the SSA**, except for the HOYS Ladies Show Horse Qualifier when non SSA Members **MUST BECOME** Temporary Members of the NSSSG. Only SSA UK Members may take Trophies home (those who cannot will be given a Memento).
- 15. Competitors' Numbers** provided by the NSSSG must be worn tied round the waist so visible from the back for all classes, including Clear Round Jumping, except the Rococo, Caro, Costume & Fancy Dress, but must still be clearly visible. Each Competitor/Rider combination must use its own number.
- 16. Competitors' Riding Style** will be side saddle, except where stated otherwise, in Class rules.
- 17. Competitors' Riding Times** will be allocated for the classes stipulated and which must be adhered to or risk elimination. Times may be obtained from The Show Office on 29th July, 2022 (between 1.00 & 5.00pm), preferably by email, the Show Website and will be displayed on the Show Notice Boards. Competitors are responsible for presenting themselves **at least** 15 minutes prior to their allocated time. Competitors may be invited to ride before their allocated time but may elect to wait until their designated time. Classes will not be held up for missing Competitors.
- 18. Dogs** must be kept on leads at all times, and are not allowed in any of the Main Buildings, Cafeteria or Stable Barn, unless special permission has been obtained from the Show Office. Dogs who bark continuously are not welcomed and you may be asked to remove them. (Please "Pooper Scoop"!).
- 19. Dressage Test Callers/Grooms** must be appropriately dressed and wearing a suitable hat.

## NSSSG RULES & CONDITIONS OF ENTRY CONTINUED

- 20. Electric Hook Up** must be booked in advance with BFEV using their Stable Booking form.
- 21. Emergency Access** must be available at all times and Vehicles parked and tents erected appropriately to reduce the risk of fire and allow emergency access.
- 22. Emergencies** requiring assistance at any time should refer to the "On the Showground Emergency Contact Number" in the Schedule, Catalogue and the Show Office Notice Board.
- 23. Entries close on Monday 4<sup>th</sup> July, 2022 and will only be accepted "On Line" or on the Official Entry Form. All Hard Copy Entry Forms incur a £1.50 charge** to be entered onto the Show Entries System required for all Reports, Scoring, etc., (On Line entries already pay this). **Entries sent by post requiring a delivery signature, telephone, e-mail will NOT be accepted. Payment in full must accompany all entries. If a receipt required, an SAE marked 'Receipt'. Entries received after entries close, will incur a Late Entry Charge of £5.00 per class.** See Late Entries.
- 24. Entry Fees** are stated alongside each class. Overpayments of under £5.00 will be donated to Show funds. Overpayments of more than £5.00 will be refunded. All underpayments will be claimed by the Show. Should classes be cancelled, due to lack of entries, Entry Fees will be refunded.
- 25. Entry Forms** may only be used for a single combination of horse/pony and rider. Additional Entry Forms are available from the Show Website, Office or a photocopy of the Entry Form may be used. Competitors must declare their eligibility for Specials Awards, Trophies, etc., at the time of entering.
- 26. Entry Refunds**, less a £10 administration fee, will only be given, under exceptional circumstances and require the presentation of a Medical or Veterinary Certificate.
- 27. Exercising** on Thursday is in the Grass Field & Arena 2 and then as shown on the Timetable.
- 28. Falls of Horse/Pony or Rider** in any class will result in elimination and the rider must leave the ring dismounted. It is strongly recommended medical advice be sought before competing in other classes. Judges & Stewards must report all falls, to the Show Office.
- 29. Farrier services** are by private arrangement only. There will be no "On Call" Farrier.
- 30. Fires** in the open are not permitted anywhere at BFEV.
- 31. Generators** must be used with consideration and personal ones be turned off between 11pm and 7am. The BFEV Generators will be running all night to supply Hook-Up to those who have paid for it and lights, as required for H&S. If the noise is likely to disturb you, please park away from them.
- 32. Grooms** will only be permitted to enter competing rings at the request of the Judge(s) & must be smartly and appropriately dressed, wearing a suitable hat.
- 33. Health and Safety (H&S)** requires the NSSSG's commitment to fulfilling its legal obligations under the current H&S at Work and associated legislation. Reasonable precautions will be taken by the NSSSG to ensure the H&S of persons present. For these measures to be effective, everyone must take all reasonable precautions to avoid and prevent any accidents occurring and must obey the Show Organisers and Officials. Any H&S issues should be addressed to the Show Office where the H&S Policy Statement is available.
- 34. Horses/Ponies** considered to be dangerous or unruly may, at the NSSSG's discretion, be asked to leave the Showground and at Judges' discretion, be asked to leave Judging Arenas.
- 35. Horse walks** to Arenas are to be used at all times and failure to do so risks elimination.
- 36. Insurance, Third Party Liability**, should be arranged by Competitors for themselves and their horses. The NSSSG holds Public Liability Insurance.
- 37. Insurance Liability Disclaimer:** BFEV, the NSSSG, the SSA, and their Officials cannot be held responsible for any loss, damage or injury to persons, animals or property, however caused.
- 38. Judges' Decisions** are final.
- 39. Late Entries will not be accepted** for Classes when "Riding Times" are given, unless qualified after the entries closing date, when there is no Late Entry Fee **BUT** if you think you will qualify, please enter before entries close so Riding Times can be allocated. You will be refunded in full if you do not qualify. For all other classes, if not full, late entries may be accepted, provided the correct documentation is presented at the time of entry, at the NSSSG's discretion. These late entries will incur a surcharge of £5.00 per class. Transferring entries from one class to another or change of horse/rider will incur a £5.00 surcharge per change.
- 40. Lead Rein Competitors** must be Lead Rein Competitors for the duration of the Show and may only enter the specified classes. The Lead Rein must be affixed to the Noseband, the reins must go direct from the bit to the rider's hand and handlers must be aged 16 or over at the time of the Show. Leaders of lead rein competitors must be correctly dressed including safe footwear and appropriate headgear.

## NSSSG RULES & CONDITIONS OF ENTRY CONTINUED

**41. Objections** must be made in writing to the Show Office within 30 minutes of the conclusion of the class, or the posting of the Scores. A fee of £35.00 shall accompany any objection and will be returned if the objection is upheld. Only SSA Members may lodge objections in Classes run under SSA rules.

### **42. Overseas Competitors**

**a) Please** refer to the SSA Handbook and Class rules for the Equitation Championships.

**b) Dress** for when competing in Equitation and Equitation Jumping classes, English habits and hard hats when required, are compulsory. In other classes, Overseas Members may wear traditional habits.

**43. Photographers** may only enter Arenas during classes and/or prize giving if they are appointed as the Official Photographers or are wearing a Press Pass, available from the Show Office. Only the NSSSG's Official Photographers may sell photographs at the Show.

**44. Presentations** should be attended out of courtesy to Sponsors but if unable to attend because riding in other classes, please inform the NSSSG Show Office.

**45. Prize Money** awarded is stated alongside individual classes. The NSSSG reserves the right to withhold prize money and awards if Classes are amalgamated or cancelled. Prize money must be collected at the show. Failure to do so will result in forfeiture and will be put towards Show Funds.

**46. Refreshments** will be available, at the publicised times from the Cafeteria which sells Hot and Cold meals. Judges, Sponsors, Officials, Stewards, Visitors and Trade Stand holders are invited to partake of light refreshments at the Hospitality Area in the International Arena Upstairs Gallery Restaurant.

**47. Saddles, Tack & Equipment** rules are in accordance with current SSA Handbook Guidelines and individual class requirements. Running, draw, check or balancing reins are prohibited at all times. Lunging is permitted, but only in appropriate areas. Side reins may only be used if the horse is being lunged without a rider.

**48. Smoking** - is strictly forbidden within the Stables and Permanent Buildings.

### **49. Stabling & Horse Box Park Rules**

**a) Stabling** must be booked in advance with BFEV [www.buryfarmestates.co.uk](http://www.buryfarmestates.co.uk) using their Booking Form. Please note the BFEV Terms and Conditions agreed to when applying for Stables with them.

**b)** The NSSSG reserves the right, at their discretion, to retain Permanent Stables for Competitors including those who are Disabled, Overseas and travelling long distances, etc. **Permanent Stables may not be booked for storage, sleeping in, as dog kennels, etc.**

**c) Alterations** to Stabling booked must be notified to BFEV one week in advance; changing stables is only permitted by arrangement with the BFEV Stable Manager during the Show. **Arriving Competitors** with Stables booked must report to the BFEV Stable Manager.

**d) Barbecues** are not permitted in the Lorry park.

**e) Bedding & Haylage** can be purchased from the BFEV Stable Manager in advance and during the Show or you can bring your own. Only shavings may be used in the Indoor Stables.

**f) Fire Extinguishers** should be carried in all Horseboxes.

**g) Hay/Haylage** will be available for purchase from the BFEV Stable Manager.

**h) Horses/ponies** may only be led/ridden at a walk in the stable and lorry park areas.

**i) Washing** of tack/boots in the Loos/Showers and horses within the Stable areas is not permitted.

**50. Stallions** must wear a blue ribbon in their tail and a bridle disk. Riders aged under 14 on 1<sup>st</sup> January of the current year, are not permitted to ride stallions at any time and the rider of any stallion is responsible for ensuring they are under control at all times.

**51. Timetable** updates will be included in Competitors' Envelopes and posted in the Show Office. Every effort will be made to adhere to the Timetable. No class will commence before the published time.

**52. Turnout Areas** may not be created anywhere on the Showground.

**53. Trade Stands** space must be booked in advance, with the NSSSG, and will be on the Lawn adjacent to the Arenas. Non-Trade stand holders may not "trade" goods or fit or repair saddles for remuneration, within the lorry park, car park or other areas of The Showground, except in the case of a "one off" sale.


**54. Trophies** are Perpetual Challenge Trophies, unless otherwise stated, and belong to the SSA. They are presented on the understanding they are returned clean and engraved 1 month prior to the next year's Show or as instructed by letter and Trophy Holders will advise the SSA Trophy Steward of any change of address. Trophies may only be taken home by SSA UK Members.

**55. Vaccination Certificates** for Equine Influenza and Tetanus, must be up to date in accordance with current FEI/BE regulations in accordance with the current SSA Members' Handbook and/or any updates posted on the SSA Website. You **MUST** carry the Certificate with you in case of inspection.

**56. Veterinary Services** will be available, on call, from **Chiltern Equine**. Competitors are responsible for paying for any treatment received. Tel: 01525 222099.




drinkaware.co.uk  
for the fact!

“ Saving the  
planet tastes

ble  delicious”

– Tom Warner

Discover our farm-grown gin  
[warnersdistillery.com](http://warnersdistillery.com)

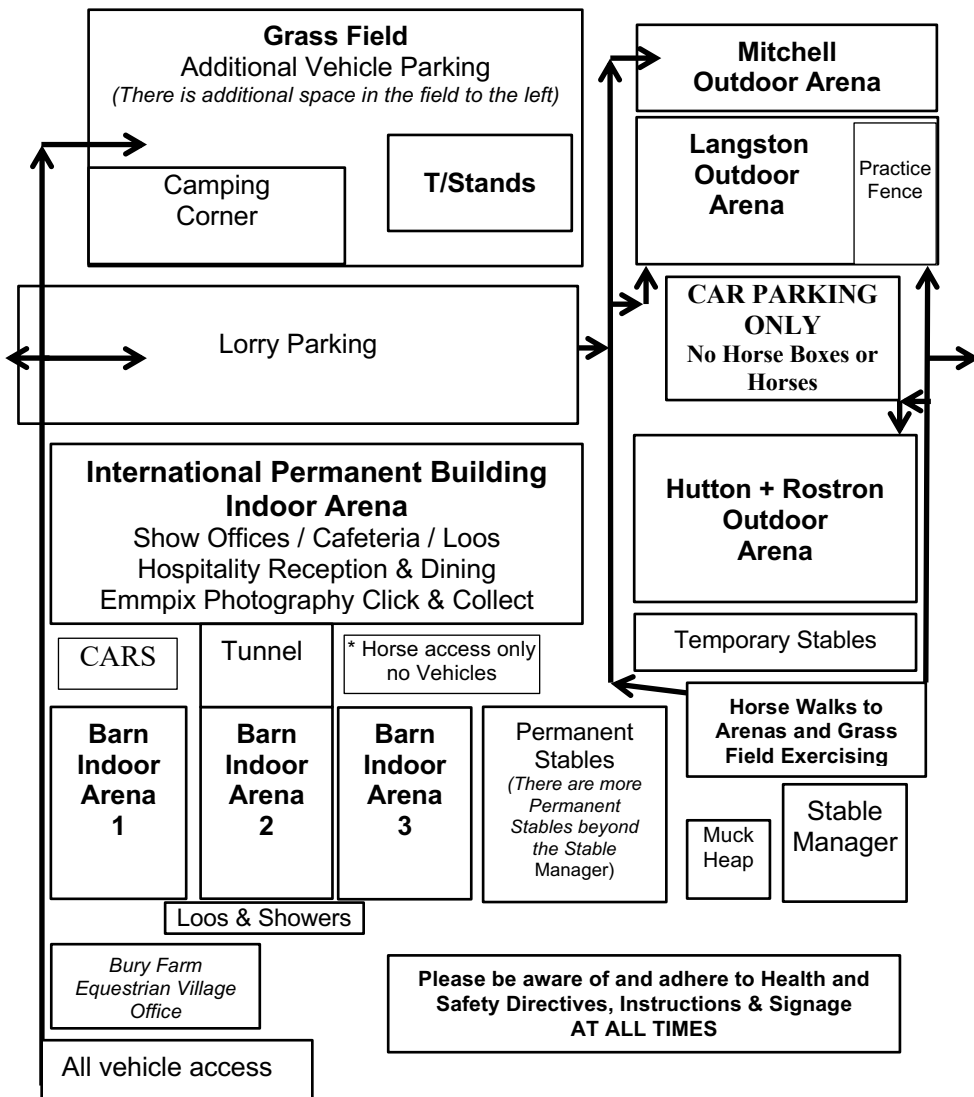
@warnersgin    



**1%** FOR THE PLANET

# Provisional Bury Farm Equestrian Village Layout

(not to scale)



Whilst permitted, NO Dogs are allowed in the Permanent Building  
 Poo picking is essential throughout the Showground and an immediate on the spot £10 fine will be incurred for not clearing up after your Dog/Horse/Pony in the Lorry Parks, misuse of Loos and/or Showers, cleaning tack, washing horses inside any Stabling area, etc., will incur the same penalty and donated to Show Funds

For directions, please visit:  
<http://www.buryfarmestates.co.uk/maps.asp#.Yl6SOWZKi8Y>  
 Don't just follow your SatNav - it is not necessarily the best route for Horses Boxes/ Caravans